

VTL4-L 3 CCT SELECT, NEMA 4X, NSF VAPOR TIGHT SERIES

4' luminaire providing superior light distribution with the ability to withstand reduced temperatures and moderate impact. Ideal for environments where moisture and/or dust may be present. The watertight seal locks out dust and makes this fixture the perfect solution for applications that may require: washability/hose down.



■ Color Selectable

CCT Selectable feature available on all configurations offering the versatility to switch between 3 color temperatures: 3000/4000/5000 K. Convenient for a variety of projects and applications. An ideal solution for reducing stocking inventory.

■ Easy Maintenance

Smooth surfaces are easy to clean making this fixture perfect for NSF compliant environments. Internal components are easily accessible with the stainless steel clips. Once closed, the gasketed seal keeps the LEDs and electrical components secure from environmental debris and moisture.

■ LINK Compatible For Emergency Lighting

The LINK option complements the vapor tight luminaire to eliminate the need for obtrusive remote emergency lighting units, creating one clean architectural space.

VTL4-L: At a Glance

- **Lightweight, Slim and High Impact Resistant Polycarbonate Construction**

- **Stainless Steel Latches**

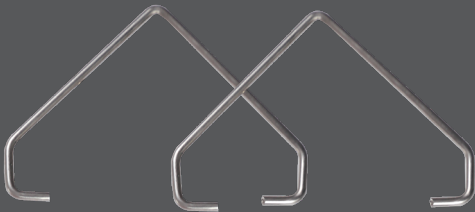
- **CCT Selectable Feature**
Easily change color temperature option with the simple touch of a button. The slider button is discretely placed inside the housing

- **Polycarbonate Frosted Lens**

Included with Every Luminaire!

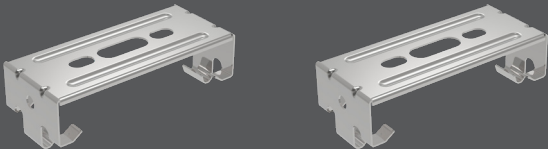
V-HOOKS

Set of 2 pcs for suspension mounting on chain or aviation cable.
To be used in conjunction with the surface mount brackets.



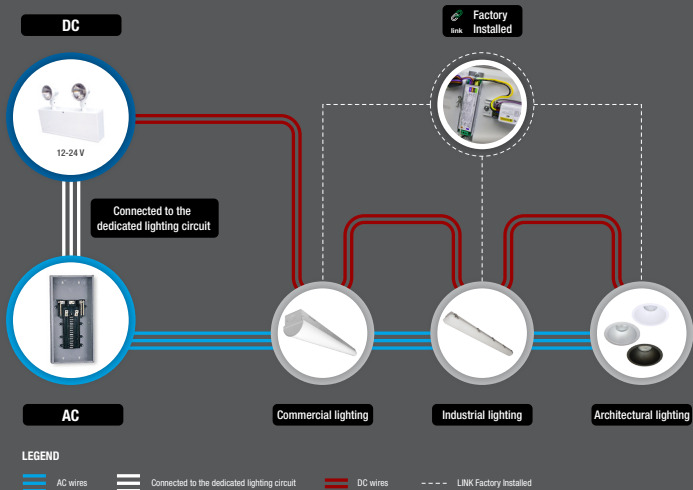
MOUNTING BRACKETS

Set of 2 pcs stainless steel surface mounting hardware for wall or ceiling.



LINK Option

NORMALLY ON EMERGENCY REMOTE LUMINAIRE



Summary Specification Table

| Order code | Model number | DLC unique ID | Watts (W) | Volts (V AC) | Color temp. (K) ² | Lumen output (lm) ³ | Efficacy (lm/W) | CRI | Life L70 (hrs) ⁴ | Tested hours LM-80 (hrs) ⁴ | Dimming | Power factor | THD (%) |
|----------------|---------------|---------------|-----------|--------------|------------------------------|--------------------------------|-----------------|-----|-----------------------------|---------------------------------------|---------|--------------|---------|
| 4 ¹ | | | | | | | | | | | | | |
| 68320 | VTL4-LS4-W/3C | PLW4QC7UOLNS | 67 | 120-277 | 3 CCT (3 500/4 000/5 000) | 8 560 | 128 | 80+ | >50 000 | 140 000 | 0-10V | 0.928 | 13.56 |
| 68322 | VTL4-LS3-Q/3C | PLAKT91G7RKG | 42 | 120-347 | 3 CCT (3 500/4 000/5 000) | 5 450 | 130 | 80+ | >50 000 | 140 000 | 0-10 V | 0.9981 | 9.53 |

¹ **QUICK SHIP:** Product availability is subject to change without notice. Please contact your Stanpro customer service representative to confirm inventory levels at time of order.
² Typical color temperature range: +/- 5 %.
³ Lumen values are based on 3 500 K default setting. Please refer to Quick Ship Technical Specification Table for more details on other color temperatures.
⁴ Life hours are derived from IESNA LM-80-08 testing report and projected per IESNA TM-21-11 extrapolations.

ORDERING GUIDE

| VTL4 | L | | — | | / | 3C | / | |
|--------|-----------|--------------------------|----------------------------|------------------------------|---|----|---|--|
| Series | Lamp type | Lumen package (lm) | Volts (V) | Color temp. (K) | Options | | | |
| VTL4 | L - LED | S3 - 5 460 S4 - 8 450 | W - 120-277 Q - 120-347 | 3C - 3 500 4 000 5 000 | Blank - No sensor OS ^{1,3,5} - Occupancy sensor DIM1 ² - 5 wire cable for AC and 0-10 V dimming EL1 ⁶ - 1 LINK Normal ON Emergency Remote DL ^{3,5} - Emergency backup (0°C - 25°C) KV - 10k V Surge protector L6 - 6' white power cord L10 - 10' white power cord L6-BK - 6' black power cord L10-BK - 10' black power cord CH ⁵ - Center hole 7/8" AC - Aviation cable kit PVM ⁴ - Pivot mount brackets (surface mount ceiling and wall) | | | |

¹ To see available options, please consult the occupancy sensors section.
² When selecting DIM1 option please also select cable option whether L6, L10, L6-BK or L10-BK.
³ The options DL and OSI are not compatible together.
⁴ Pivot mount brackets (surface mount ceiling and wall).
⁵ When selecting CH, OS and DL options, the fixture maintains wet location status, NEMA 4X and IP rating are no longer applicable.
⁶ When in Emergency Mode, unit only consumes 11 watts.