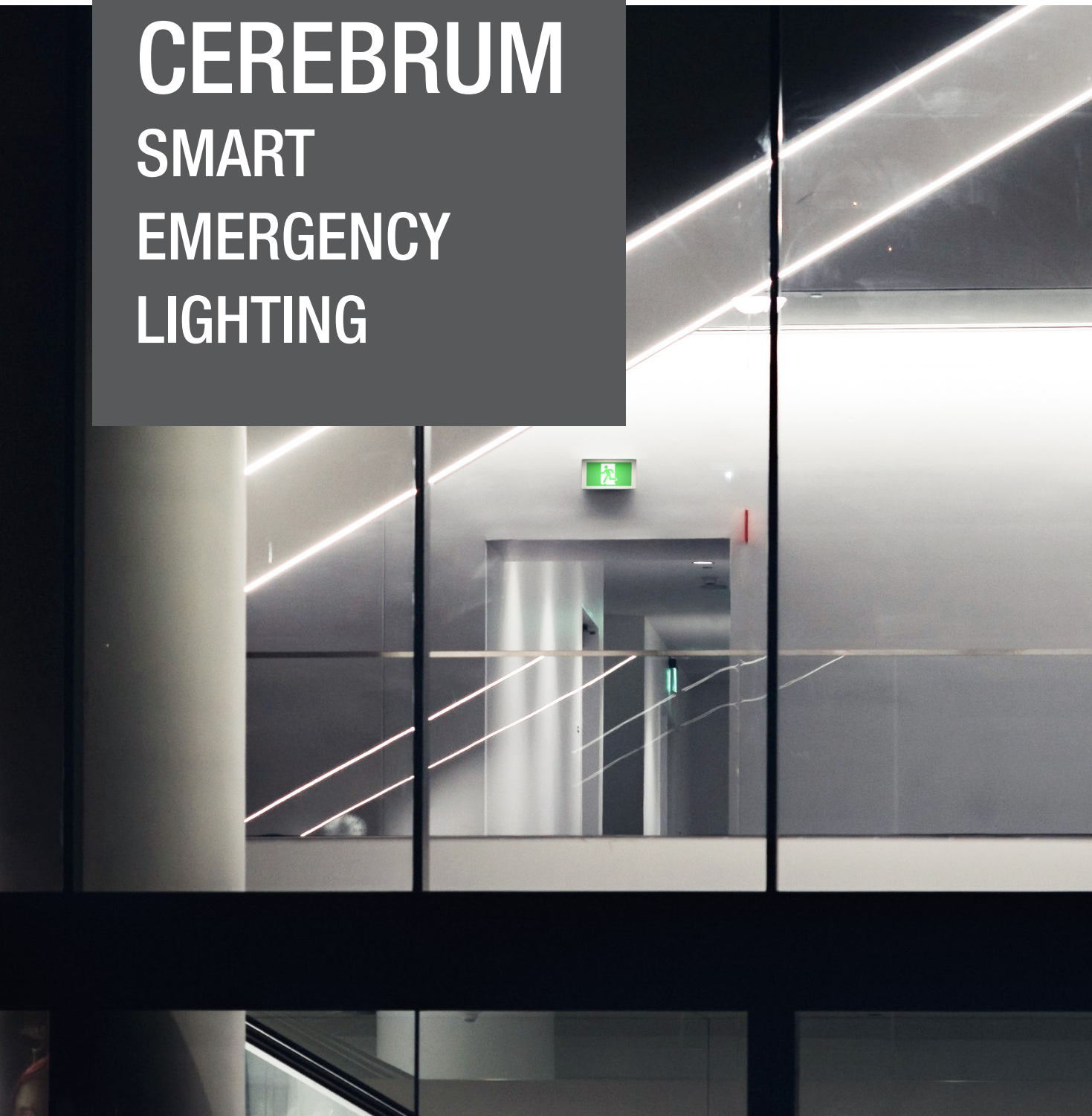


CEREBRUM

SMART
EMERGENCY
LIGHTING



MODERN SETUP, SMARTER SOLUTION

Reliability is the most important feature of any emergency power source. Without it, all other features and benefits are meaningless. Fortunately, there is now an innovative and reliable solution that greatly simplifies the installation process and considerably reduces the cost of material, labor, monitoring and maintenance: the Cerebrum system. In fact, normally on signs and normally off remotes must operate independently on the building's power in the event of a power failure. It thus requires two different cables just to connect the emergency fixtures. A third wire is even needed if we want to allow communication

between the units. It therefore generates important material and labor cost, especially for large and vast building where running thousands of feet of wire is needed. The Cerebrum system is hence the perfect solution to encounter those important costs, because it only needs a single cable instead of 3. It is actually the Cerebrum drivers within the units that will allow determining what will normally be off or normally on in the circuit, as well as permitting the communication between the units and the Cerebrum Software.

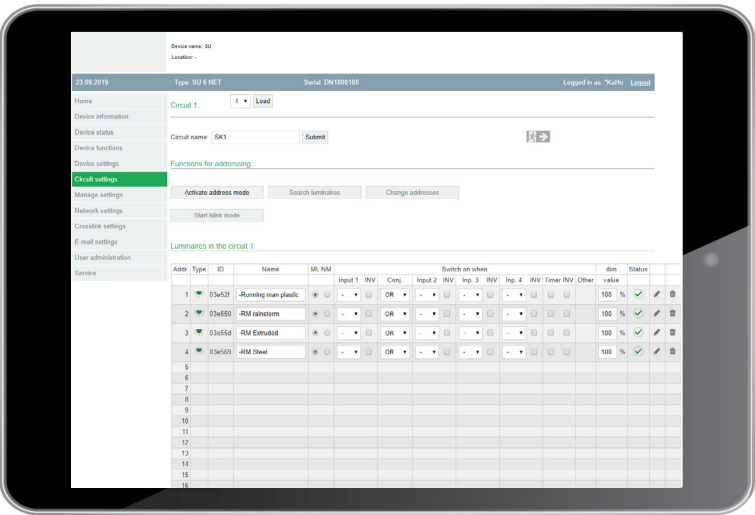
CEREBRUM LAYOUT

Cerebrum system is a compact centralized battery that has 144 W of capacity for 1 hour.
An extra battery pack can be added to increase duration, if needed. It can be split across 6 channels and be related to a maximum of 120 devices. There are 8 compatible products with Cerebrum system: 7 signs and 1 remote.

Since it's a centralized battery, only one point of maintenance and service is required, being again a cost effective solution.

CUSTOMIZATION

The Cerebrum system is equipped with an automatic search and light coding function. It means the main user can identify every single unit present in a building with a unique name or code. It's therefore easier for maintenance afterwards and avoids laborious coding errors.



Reliability is the most important feature of any emergency power source. Without it, all other features and benefits are meaningless.

KEY FEATURES

- All-in-one solution handling Normally On, Normally Off and communication with the same pair of wires
- Monitors the emergency lighting system by automatically performing the tests required by the National Fire Code of Canada
- Cerebrum connects to internet via Ethernet cable and can be controlled through the app or web from anywhere in the world
- All Cerebrum systems installed in multiple buildings can be controlled, operated and monitored remotely in the same group using the Cerebrum Web platform
- Maintenance report is created and available on the app or web platform
- Error notification and important information are sent to the predefined user
- Cerebrum is a centralized battery meaning only one point of service is needed



MONITORING
& MAINTENANCE

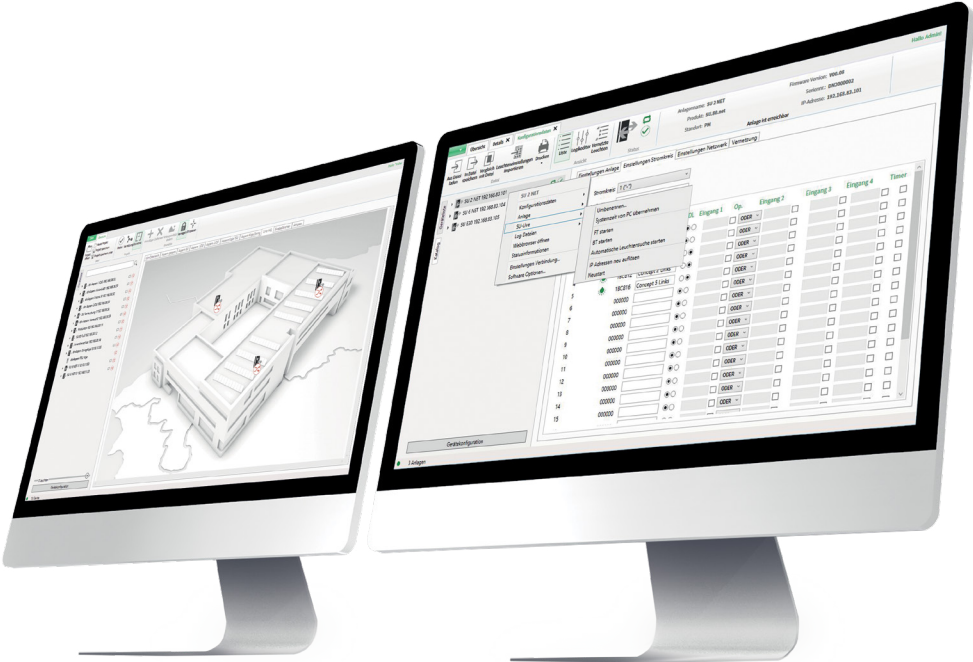
The autotest feature allows testing of your emergency system to the Firecode of Canada's requirements. All tests and changes to the system are logged. Reports are automatically sent via email for effective maintenance. If a lamp is no longer turning on, receive a fast update by email.

For example, if there is a load variation in the system, the Cerebrum software will create a report accessible in the web platform and will send an error message by email to the main user. Since it is possible to identify the units by a unique name the main user will easily know where the defective fixture is located in the building so it can be replaced.

NETWORKING

Due to the Cerebrum functionality, all systems in its group can be centrally controlled, operated and serviced. Ultimately, the full potential of the Cerebrum system unfolds with its visualization software. Cerebrum connects to internet via Ethernet cable and can be controlled through the app or web from anywhere in the world.

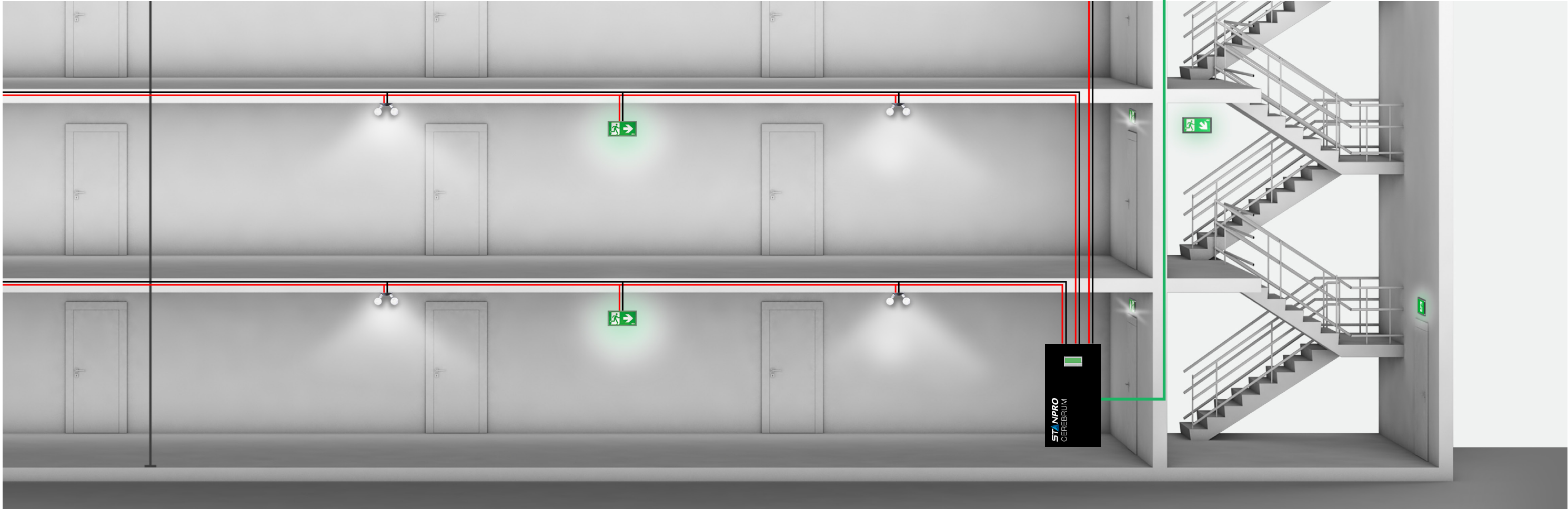
All the emergency lighting systems of multiple building can thus be visualized in the same network, by a single person and from any location with an internet connection. Information about the status of the systems will be sent by e-mail to the main user.



Same pair of wires for
Normally ON signs,
Normally OFF remotes
and communication



Control the Cerebrum Web
platform through the app or web
from anywhere in the world



CEREBRUM

SMART EMERGENCY LIGHTING

The CEREBRUM system is an innovative solution to emergency lighting with its advanced features in a simple layout and cost-effective installation. This is an all-in-one solution that handles Normally ON, Normally OFF, and communication with the same pair of wires. CEREBRUM is connected to the internet via an Ethernet cable and can be controlled through the app or web from anywhere in the world. It is thus possible to control more than one unit within a single building, as well as manage multiple buildings remotely from a single access point. Furthermore, only one point of maintenance is needed since it is now possible to daisy-chain your Running Man signs and remote lights back to your centralized CEREBRUM battery unit. The auto-test feature allows testing of your emergency system to the fire code of Canada's requirements. All tests and changes to the system are logged. Reports are automatically sent via email for effective maintenance.

FEATURES AND SPECIFICATIONS

- **Circuitry**
 - 120/277/347 VAC input, field selectable
 - 24 VDC output
 - 144 W maximum evenly split across 6 inputs (channels) not exceeding 54 W per input (channel)
 - 2 DC terminal blocks per input (channel)
 - Wattage capacity of 144 W maximum for 30 and 60 min emergency power duration standard
 - Extra battery pack can be added for more duration
 - Fully automatic, current limited charger
 - High performance battery
 - Programmable auto-test
 - Ethernet port
 - TFT display
 - 4 operations buttons
- **Mechanical**
 - Steel construction
 - Black powder coat finish comes standard
 - 3 keyholes for wall mount
 - 19 knockouts of 20mm for easy wiring
 - Conduit entry knockouts
- **Compatible devices**
 - Signs: RMS, RMXL, RMQ, RMV, RMPS, RMEA, RMR
 - Remote: N head, SWN
- **Approvals**
 - Certified CSA to C22.2 #141-15

OVERVIEW

Light source	LED
Input voltage (VAC)	120, 277, 347
Wattage capacity (W)	144
Max. channels	6
Max. connected devices	120

For complete warranty details, please see our terms and conditions on our website.



ICES
005



ORDERING GUIDE

Part number	Volts (VDC)	Watts (W)	Light source	Input volts (VAC)	Color
CEREBRUM-6	24	144 (1 hour)	LED	120/277/347	Black

ADD-ON

Part number	Description
CER-6-BATT	Battery pack and cabinet extension for Cerebrum (order separately)

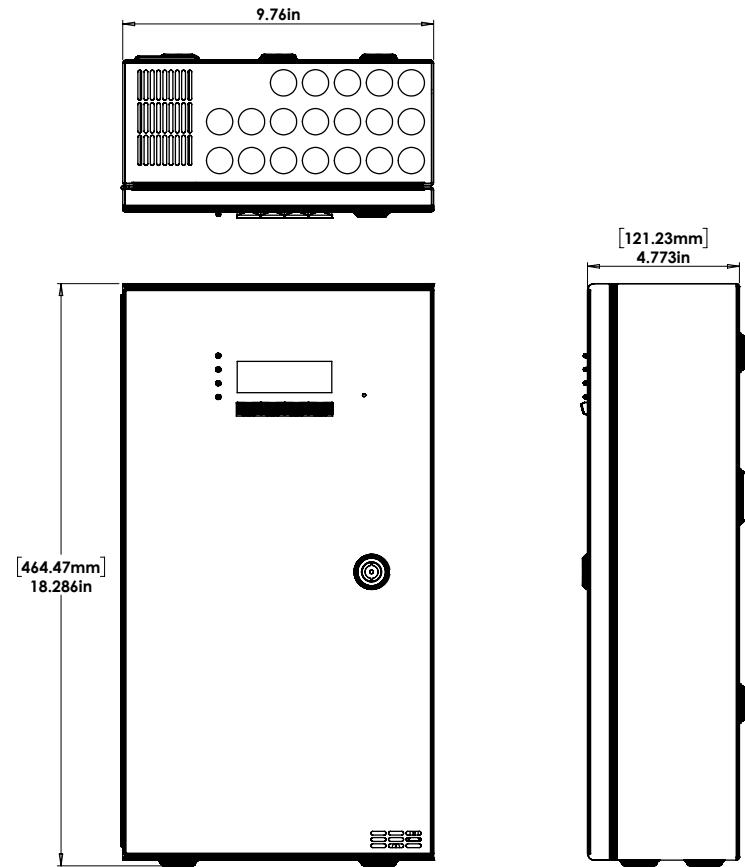
MODEL RATINGS¹

	60 min	120 min	180 min	720 min
CEREBRUM-6	144 W	96 W	60 W	24 W
CEREBRUM-6 + CER-6-BATT ²	180 W	180 W	180 W	72 W

¹Consult your representative for more details

²Power supply limited to 180 W

DIMENSIONS





RMS

STEEL RUNNING MAN SIGN

Specification grade sign

The clean lines of the RMS series of commercial steel signs present a fully modern appearance. The high quality steel housing eliminates light leaks and provides superior illumination and uniformity. The RMS series offers a wide variety of options.




cerebrum
compatible


quick
ship


LED
fixture


ICES
005


Energy Verified
Energie Vérifiée

ORDERING GUIDE

RMS				
Series	Nbr of faces	Color	DC Volts* (V DC)	Options
RMS	0 - Universal faces	WH - White (standard)	UDC - Universal DC backup voltage from 6 to 24	AT ¹ , B0 ² , K5, PGD, OP, TP, WO, WGD ³ , LB
	1 - Single face	BK - Black	IB - Self-powered for 90 minutes	0 - No indicators (double face only)
	2 - Double face	GY - Grey	SP - Custom color (please specify)	↓ ↑ ↗ ↘ ↙ ↘ D U UR DR DL UL
			CER - Cerebrum driver	Note: Indicators option available for single & double option only.

¹ If AC only is required, select the UDC option and do not connect the DC wires when installing.
² AT available with IB and IB1.
³ Specify mounting.

RMV

VANDAL RESISTANT

NBC2015 Compliant

The RMV series is designed to withstand extremely abusive environments like correctional facilities and schools. The signs are constructed from 16 gauge steel with an integral Lexan shield. Available in AC only, AC/DC and internally self-powered versions.


LED
fixture


ICES
005


cerebrum
compatible


Energy Verified
Energie Vérifiée



RMV					
Series	Nbr of faces	Mounting	Color	DC Voltage* (V DC)	Options
RMV	1 - Single face	CM - Ceiling mount	WH - White (standard)	UDC - Universal DC backup voltage from 6 to 24	AT ¹ , B0 ² , HVC, OP, WGD ³ , WO ²
	2 - Double face	WM -Wall mount	SP - Custom color (please specify)	IB - Self-powered for 90 minutes	0 - No indicators (double face only)
		EM - End mount		IB1 - Self-powered for 120 minutes	↓ ↑ ↗ ↘ ↙ ↘ D U UR DR DL UL
				CER - Cerebrum driver	Note: Indicators option available for single & double option only.

*If AC only is required, select the UDC option and do not connect the DC wires when installing.
¹ T available with IB and IB1.
² Available only with OP option.
³ Specify mounting.





RMEA
EDGE LIT
Universal Mounting

The RMEA series of commercial edgelit signs provides interiors with a clean, distinguished appearance. Standard universal surface mount with optional recessed backbox assembly. The RMEA series is available in AC only, AC/DC and internally self-powered versions.



RMEA					
Series	Nbr of faces	Mounting	Color	DC Volts (VDC)	Options
RMEA	0 - Universal faces	Blank - Universal mount PM - Pendant mount	WH - White BK - Black BA - Brushed aluminum	UDC - Universal DC backup voltage 6, 12 or 24 selectable ²	GEN - Generators and inverters compatible (for NDC only) ³
	1 - Single face 2 - Double face			NDC - AC only IB - Self-powered for 90 minutes ² IB1 - Self-powered for 120 minutes ² CER - Cerebrum driver	CCWH - Canopy and endcaps white (for brushed aluminum only) 0 - No indicators (double face only) ↓ ↑ ↗ ↘ ↙ ↘ D U UR DR DL UL Note: Indicators option available for single & double option only.

¹ Black end caps and canopy (standard).
² UDC, IB & IB1 versions not intended for installation on generators.
³ GEN option is mandatory with NDC

RMR
RAINSTORM
NBC2015 compliant
NEMA4X

The RMR series of NEMA4X and EEMAC4X rated weatherproof signs is designed to operate in extreme environments. The fully gasketed housing is suitable for outdoor and wash-down locations. Available in AC only, AC/DC and internally self-powered versions.



RMR						
Series	Nbr of faces	Mounting	Frame color	Face color	DC Volts (V DC)*	Options
RMR	1 - Single face 2 - Double face	CM - Ceiling mount WM - Wall mount EM - End mount PM - Pendant mount	GY - Grey	GY - Grey (standard) BK - Black (indoor only)	UDC - Universal DC backup voltage 6, 12 and 24 IB - Self-powered for 90 minutes IB1 - Self-powered for 120 minutes CER - Cerebrum driver	AT ¹ , BO, OP, WGD ² , WO 0 - No indicators (double face only) ↓ ↑ ↗ ↘ ↙ ↘ D U UR DR DL UL

*If AC only is required, select the UDC option and do not connect the DC wires when installing.
¹ AT available with IB and IB1.
² Specify mounting.





RMXL

EXTRUDED ALUMINUM

NBC2015 Compliant
120/277/347 V AC Input

The clean lines of the RMXL series of commercial extruded aluminum signs present a fully modern appearance. The extruded aluminum provides for a rigid, durable and lightweight sign. Available in AC only, AC/DC and internally self-powered versions.




cerebrum
compatible


LED
fixture


ICES
005


Energy Verified
Energie Verifiée

RMXL				
Series	Nbr of faces	Color	DC Voltage* (V DC)	Options
RMXL	0 - Universal face 1 - Single face 2 - Double face	WH - White (standard) BK - Black GY - Grey BA - Brushed aluminum SP - Custom color (please specify)	UDC - Universal DC backup voltage from 6 to 24 IB - Self-powered for 90 minutes IB1 - Self-powered for 120 minutes CER - Cerebrum driver	AT ¹ , BO, K5, OP, PGD ² , TP, VS ² , WGD ² , WO, LB 0 - No indicators (double face only) ↓ ↑ ↗ ↘ ↙ ↘ D U UR DR DL UL Note: Indicators option available for single & double option only.

* If AC only is required, select the UDC option and do not connect the DC wires when installing.
¹ AT available with IB and IB1.
² Specify mounting.


RMQ

THIN RUNNING MAN SERIES

Die Cast Aluminum

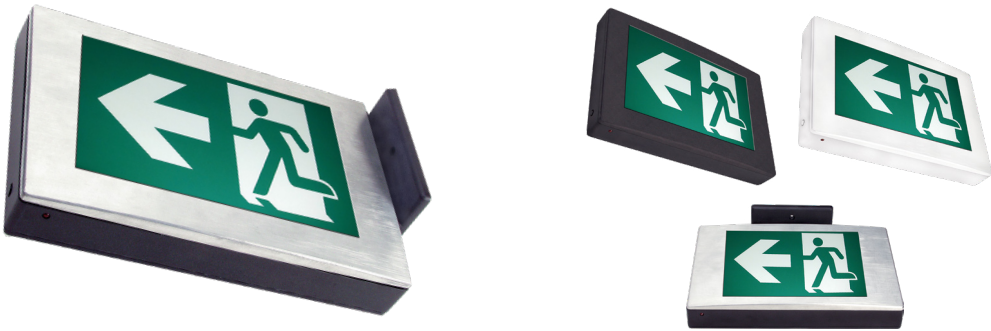
RMQ series of commercial decorative die cast aluminum exit signs are the perfect match of aesthetics and durability. The die cast construction produces an extremely rigid housing while the highly machined brushed housing lends a high-end look. The series has been designed to meet the C860 standard using energy efficient LEDs, with energy consumption as low as 1.9 W AC. Faceplates are hinged and snap into place for ease of installation.


LED
fixture


ICES
005


cerebrum
compatible


Energy Verified
Energie Verifiée



RMQ					
Series	Nbr of faces	Frame/back plate color	Face color	DC Volts* (V DC)	Options
RMQ	1 - Single face 2 - Double face	WH - White (standard) BK - Black BA - Brushed aluminum	WH - White (standard) BK - Black BA - Brushed aluminum	UDC - Universal DC backup voltage 6, 12 and 24 IB - Self-powered for 90 minutes IB1 - Self-powered for 120 minutes CER - Cerebrum driver	AT ¹ - Automatic test Self-diagnostic K5 - 1/2" Knockout for pendant mount PGD - Lexan Guard (separate order) WGD ² - Wireguard (separate order) 0 - No indicators (double face only) ↓ ↑ ↗ ↘ ↙ ↘ D U UR DR DL UL

* If AC only is required, select the UDC option and do not connect the DC wires when installing.
¹ AT available with IB and IB1.
² Specify mounting.





RMRN

“NOAH”

WET LOCATION ANTI VANDAL RUNNING MAN

120/277/347 VAC Input

The RMRN series of wet location anti vandal running man is designed to operate in extreme environments. The unit, designed using a polycarbonate housing, maintains its sealed interior with a continuous integral gasket. As well, LED pilot light and test switch are sealed type. Available in AC/DC and internally self-powered versions.



RMPS

PLASTIC RUNNING MAN

120/277/347 VAC

The RMPS series is suitable for property management and institutional applications, and is designed using durable and lightweight high impact thermoplastic. Available in AC only, AC & DC, and self-powered versions.



quick ship



cerebrum compatible



LED fixture



RMPS		WH		
Series	Nbr of faces ¹ and mounting	Color	DC Output	Options
RMPS	0 - Universal 1 - Single face ¹ 2 - Double face ¹	WH - White	UDC - Universal DC backup voltage from 6 to 24 VDC IB - Self-powered for 90 minutes IB1 - Self-powered for 120 minutes CER - Cerebrum driver	WGD - Wireguard (separate order) ² 0 - No indicators (double face only) ↓ ↑ ↗ ↘ ↙ ↘ D U UR DR DL UL

¹ Unit comes standard as universal face. Single face or double face should only be specified when choosing nonstandard fibers.
² Specify mounting.
QUICK SHIP: Not all products are Quick Ship. To view our Quick Ship qualified products, please consult our Quick Ship Product Guide at stanprols.com/quick-ship-product-guide. Product availability is subject to change without notice. Please contact your Stanpro customer service representative to confirm inventory levels at time of order.

RMRN					
Series	Nbr of faces	Mounting	Color	DC Volts (VDC)	Options
RMRN	1 - Single face 2 - Double face	Blank - Universal	BK - Black WH - White	UDC - Universal DC backup voltage from 6 to 24 IB - Self-powered for 90 minutes IB1 - Self-powered for 120 minutes CER - Cerebrum driver	AT ¹ - Auto test standard CW ² - Cold Weather at -20°C to +40°C 0 - No indicators (double face only) ↓ ↑ ↗ ↘ ↙ ↘ D U UR DR DL UL

¹ Available only with IB & IB1. Mandatory with IB & IB
² Available only with IB.



SWN

“NOAH” WET LOCATION ANTI VANDAL REMOTE

Single or double

The SWN series of wet location anti vandal remotes is designed to perform in extreme environments. The single or double lamp assemblies are completely protected from the elements within a fully gasketed polycarbonate housing.


cerebrum
compatible


LED
fixture




ICES
005







SWN		—				
Series	Nbr of heads	Volts (VDC operational)		Watts (W)	Lamp type	Color
SWN	1 - Single head	06-24 - 6VDC to 24VDC operational		4W - 4 watts	LR - LED	BK - Black WH - White
	2 - Double head				LA - LED	
		12-24 - 12VDC to 24VDC operational		6W - 6 watts 7W - 7 watts	LA - LED	
	1 - Single head	CER - Cerebrum driver		5W - 5 watts	LA - LED	
	2 - Double head	CER - Cerebrum driver		2.5W - 2.5 watts 5W - 5 watts		



N

PAR18/MR16 MINI REMOTE

Plastic Construction
Single, Double

The N series of commercial thermoplastic PAR18/MR16 remotes provides the perfect balance of value and performance. The heads are fully adjustable and both tilt and swivel are lockable. The standard canopy is designed to mount directly to typical electrical junction boxes.



cerebrum
compatible



quick
ship



LED
fixture



ICES
005



N			—				/		
Series	Nbr of heads	Volts (V DC operational)		Watts (W)	Lamp type	Color		Options	
N	1 - Single head	06-12V - 6 to 12		3W - 3	LJ - LED	WH - White (standard) BK - Black		LCP, TP, WGD	
	2 - Double head			4W - 4					
	3 - Triple head			5W - 5					
	4 - Quad head (requires 12" dia. canopy)	12-24V - 12 to 24		6W - 6	LA - LED				
				7W - 7					
		24V - 24	4W - 4	LR - LED					
			5W - 5	LA - LED					
	1 - Single Head	CER - Cerebrum driver	5W - 5	LJ - LED					
2 - Double Head	CER - Cerebrum driver	2.5W - 2.5							
		5W - 5							

Data is based upon tests performed in a controlled environment. Actual performance can vary depending on operating conditions.
All products are subject to change or may be discontinued any time without notice.



M

DECORATIVE REMOTE

MR16 Surface Mount

Single, Double

The M series of commercial MR16 remotes provides exceptional light output in a compact, traditional design. The die cast, all metal housing is fully adjustable with a friction lock tilt and swivel that can be locked in place with a rear mounted set screw. The canopy is designed to mount directly to typical electrical junction boxes.



M		—				/	
Series	Nbr of heads	Volts (VDC operational)		Watts (W)	Lamp type	Color	Options
M	1 - Single head	06-24V - 6 to 24		4W - 4 watts	LR - LED	WH - White (standard) BK - Black	LCP - Less Canopy
	2 - Double head			5W - 5 watts	LA - LED		TP - Tamper Proof Screws
	3 - Triple head	12-24V - 12 to 24		6W - 6 watts	LA - LED	WG - Wireguard (order separately) PG - Lexan Guard (seperate order)	
	4 - Quad head (require 12" dia. canopy)			7W - 7 watts			
	1 - Single head	CER - Cerebrum driver	5W - 5 watts	LA - LED			
	2 - Double head	CER - Cerebrum driver	2.5W - 2.5 watts 5W - 5 watts				

S

DIE CAST SOLID METAL COMPACT

Surface Mount Remote

The S series of commercial MR16 remotes provides exceptional light output in a compact, traditional design. The die cast, all metal housing is fully adjustable with a friction lock tilt and swivel that can be locked in place with a rear mounted set screw. The canopy is designed to mount directly to typical electrical junction boxes.



S		—				/	
Series	Nbr of heads	Volts (VDC operational)	Watts (W)	Lamp type	Color	Options	
S	1 - Single head	06-24V - 6 to 24	4W - 4 watts	LR - LED	WH - White (standard) BK - Black	LCP - Less Canopy	
	2 - Double head		5W - 5 watts	LA - LED		TP - Tamper Proof Screws	
	3 - Triple head	12-24V - 12 to 24	6W - 6 watts	LA - LED	WG - Wireguard (order separately)		
	4 - Quad head (require 12" dia. canopy)		7W - 7 watts		PGD - Polycarb Guard		
	1 - Single head	CER - Cerebrum driver	5W - 5 watts	LA - LED			
	2 - Double head	CER - Cerebrum driver	2.5W - 2.5 watts 5W - 5 watts				

¹ LCP option only available with Single head

SRC
RECESSED REMOTE

MR16 Recessed Ceiling
Adjustable Gimbal

The SRC series of commercial recessed MR16 remotes has been designed to blend seamlessly into modern decors. The backbox can be mounted in a variety of ways above suspended or drywall ceilings, leaving only the lamp and compact trim plate visible. Trimplates snap into the housing and come in a variety of colors and finishes.



SRC	1	—							
Series	Number of heads	Volts (VDC operational)		Watts (W)		Type	Color	Option	
SRC - Construction model	1 - Single head	06-24V -	6 to 24	4 -	4 watts	LR -	LED	WH - White (standard)	SQ - Square trim ¹
				5 -	5 watts	LA -	LED	BK - Black	
		12-24V -	12 to 24	6 -	6 watts	LA -	LED	SC - Satin chrome	
				7 -	7 watts			SP - Custom color (specify)	
	1 - Single head	CER -	Cerebrum driver	5 -	5 watts	LA -	LED		

¹ For Black square trim, contact your rep for availability

SRCR
RECESSED REMOTE

MR16 Recessed Ceiling
Adjustable Gimbal

The SRC series of commercial recessed MR16 remotes has been designed to blend seamlessly into modern decors. The backbox can be mounted in a variety of ways above suspended or drywall ceilings, leaving only the lamp and compact trim plate visible. Trimplates snap into the housing and come in a variety of colors and finishes.



S						/
Series	Nbr of heads	Volts (VDC operational)	Watts (W)	Lamp type	Color	Options
S	1 - Single head	06-24V - 6 to 24	4W - 4 watts	LR - LED	WH - White (standard)	LCP - Less Canopy ¹ TP - Tamper Proof Screws WG - Wireguard (order separately) PGD - Polycarb Guard
	2 - Double head		5W - 5 watts	LA - LED	BK - Black	
	3 - Triple head	12-24V - 12 to 24	6W - 6 watts	LA - LED		
	4 - Quad head (require 12" dia. canopy)		7W - 7 watts			
	1 - Single head		CER - Cerebrum driver	5W - 5 watts	LA - LED	
	2 - Double head	CER - Cerebrum driver	2.5W - 2.5 watts	5W - 5 watts		

¹ LCP option only available with Single head

SMC2W

VANDAL REMOTE

Double Lexan Cube



The SMC2W series of vandal resistant remotes provides reliable emergency lighting in applications typically prone to abuse and tampering. The lamp assemblies are completely shielded within a pair of heavy-duty, single piece, molded Lexan cubes. Each cube can house a single or double assembly. The durable, all steel cabinet utilizes a wrap-around cover plate for added protection and strength.



SMC2W <div></div> — <div></div> <div></div> <div></div> <div></div> / <div></div>						
Series	Nbr of heads	Volts (VDC operational)	Watts (W)	Lamp type	Color	Options
SMC2W	1 - 1 lamp per head (2 lamps)	06-24V - 6 to 24	4W - 4 watts	LR - LED	WH - White (standard) BK - Black	TP - Tamper Proof Screws WGD - Wireguard (order separately)
	2 - 2 lamps per head (4 lamps)	12-24V - 12 to 24	5W - 5 watts	LA - LED		
	1 - 1 lamp per head (2 lamps)	CER - Cerebrum driver	6W - 6 watts	LA - LED		
	2 - 2 lamps per head (4 lamps)	CER - Cerebrum driver	7W - 7 watts	LA - LED		
			5W - 5 watts			
			2.5 W - 2.5 watts			
			5W - 5 watts			

NOTES

NOTES

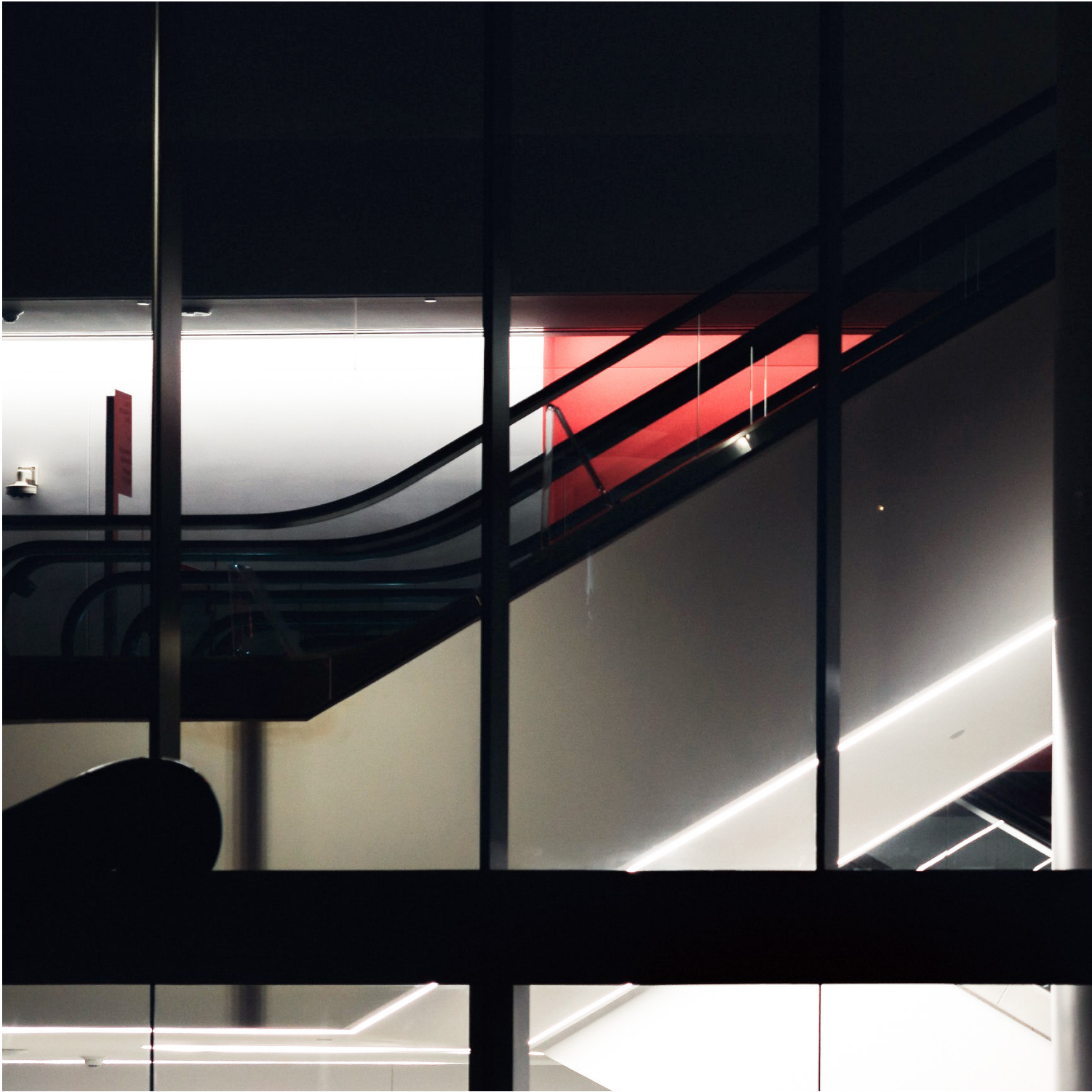
[illegible]

Printed in Canada.
© 2021 STANDARD Products Inc. All Rights Reserved.

Data is based upon tests performed in a controlled environment.
Actual performance can vary depending on operating conditions.
All products are subject to change or may be discontinued any time without notice.

For the latest version, please refer to our website.
www.standardpro.com





standardpro.com

STANPRO