

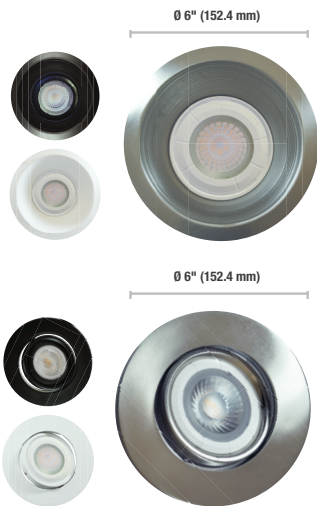
6" Housings



| Order code | Model number | Opening diameter (in.) | Volts (VAC) | Socket | Case qty (master) |
|-----------------------|------------------------|------------------------|-------------|--------|-------------------|
| Remodeler - IC | | | | | |
| 64367 ¹ | RF6in/REMOD/IC/E26/STD | 6 | 120 | E26 | 6 |

6" Trims

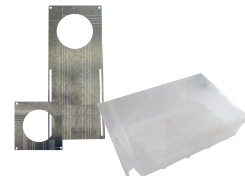
Compatible Lamp (PAR38)



| Order code | Model number | Finish | Rotation angle (°) | Case qty (master) |
|------------------------|--------------------------------|----------------|--------------------|-------------------|
| Cone - Airtight | | | | |
| 64396 | RF6/TRIM/CONE/BLK/PAR38/STD | Black | N/A | 24 |
| 64397 | RF6/TRIM/CONE/BR.NKL/PAR38/STD | Brushed nickel | N/A | 24 |
| 64398 | RF6/TRIM/CONE/WH/PAR38/STD | White | N/A | 24 |
| Gimbal | | | | |
| 64399 | RF6/TRIM/GMB/BLK/PAR38/STD | Black | 30 | 24 |
| 64400 | RF6/TRIM/GMB/BR.NKL/PAR38/STD | Brushed nickel | 30 | 24 |
| 64401 | RF6/TRIM/GMB/WH/PAR38/STD | White | 30 | 24 |

Accessories

| Order code | Model number | Opening diameter (in.) | Type | Case qty (master) |
|------------|---------------------------|------------------------|---------------------------|-------------------|
| 64921 | ACC/MPLATE/6.25IN/ADJ/STD | 6 ¼ | Adjustable mounting plate | 24 |
| 64263 | ACC/MPLATE/6.25IN/SQR/STD | 6 ¼ | Square mounting plate | 96 |
| 62679 | ACC/VAPOR BARRIER/STD | - | Vapor barrier extender | 25 |



For complete warranty information, please visit www.standardpro.com

6 clamp location

70w maximum per lamp

1^{yr} warranty

