

## Series spec sheet

# SWP

## NEMA4X REMOTE

PAR18 Weatherproof NEMA4X/EEMAC4X

Single or Double

6 V, 12 V, & 24 V lamps

The SWP series of NEMA4X/EEMAC4X rated weatherproof industrial remotes is designed to perform in extreme environments. The PAR18, single or double lamp assemblies are completely protected from the elements within a fully gasketed thermoplastic housing. The housings come complete with multiple conduit knockouts and feature a high clarity cover. Available in 6 V, 12 V and 24 V models, utilizing quartz halogen (bi-pin based) or LED lamps.

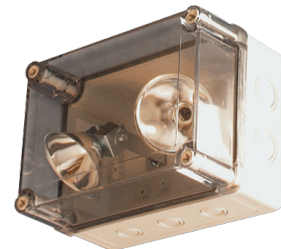
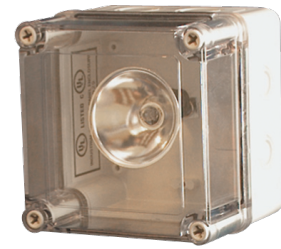
### FEATURES AND SPECIFICATIONS

#### • Mechanical

- NEMA4X/EEMAC4X weatherproof rated housing
- One or two fully adjustable PAR18 reflector assemblies can be installed within each housing
- Each individual lamp assembly is fully adjustable
- Fully gasketed thermoplastic housing c/w multiple conduit knockouts
- Industrial grey
- Variety of lamp options:
  - 6VDC, 12VDC or 24VDC
  - Quartz halogen lamps
  - LED lamps DIME

#### • Compliances

- CSA Certified to C22.2 #141-15
- Meets requirements of ICES-005



ICES  
005



For complete warranty details, please see our terms and conditions on our website.

**ORDERING GUIDE - LED**

<b>SWP</b>					<b>GY</b>
Series	Number of heads	Volts (VDC operational)	Watts (W)	Lamp type	Color
SWP	1 - One lamp assembly (square) 2 - Two lamp assemblies (rectangle)	06-24V - 6 to 24	4W - 4	LR - LED	GY - Grey (standard)
			5W - 5	LA - LED	
	12-24V - 12 to 24	6W - 6	LA - LED		
		7W - 7			

**ORDERING GUIDE - INCANDESCENT**

<b>SWP</b>				<b>GY</b>
Series	Number of heads	Volts (VDC)	Lamp type	Color
SWP	1 - One lamp assembly (square) 2 - Two lamp assemblies (rectangle)	06V - 6	See lamp selection chart below	GY - Grey (standard)
		12V - 12		
		24V - 24		

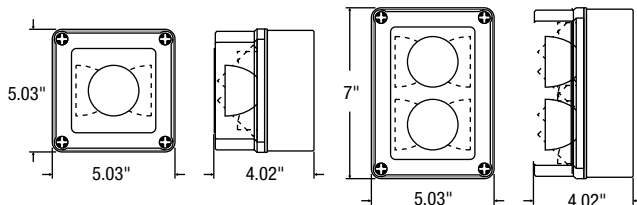
**LAMP SELECTION - INCANDESCENT**

PAR18 • Small head	6 V	12 V	24 V
Quartz halogen		10WQ	
Tungsten	09WT	09WT	09WT

**LUMEN TABLE**

Watts	Lumens
4W LR	388
5W LA	435
6W LA	507
7W LA	652

**DIMENSIONS**



**SPACING GUIDE**

Mounting height	Spacing center to center (ft)			
	4WLR	5WLA	6WLA	7WLA
8 ft	76	81	94	108
10 ft	79	79	93	106
15 ft	66	62	82	96
20 ft	53	49	73	87

Data is based upon tests performed in a controlled environment. Actual performance can vary depending on operating conditions. All products are subject to change or may be discontinued any time without notice.