

## Series Spec Sheet

# PICCOLO CHOICE

## LED TRACK HEAD

PICCOLO is ideal for accent and display lighting. It is compact and offers the flexibility to adjust your lighting needs with high lumen output and true color accuracy. Choose PICCOLO track head individually or PICCOLO kit which comes with 3 track heads, a 4' track, and a floating feed in one package. PICCOLO is perfect for residential and commercial applications. Compatible with our [STJ Stanpro tracks](#) and [track accessories](#).

### FEATURES AND SPECIFICATIONS

#### • Construction

##### Physical Characteristics

- Die cast aluminum housing with integrated heat sink
- Heavy duty scratch resistant powder coated
- Available in textured white and black
- 40° beam angle
- Frosted Polycarbonate lens

##### Mounting

- Compatible with Stanpro [STJ Tracks](#)
- Compatible with Stanpro [track accessories](#)
- Compatible with J style adaptor

#### • Performance data

- Available in 3 000 K single color temperature
- 90+ CRI
- 120 V
- 13 W
- Estimated life of over 50 000 hours to L70
- Phase cut (ELV / Triac) dimming standard
- Operating temperature:
  - 20 °C to 40 °C (-4 °F to 104 °F)

#### • Compliances

- cETLus listed for damp locations
- Energy Star
- Meets requirements of ICES-005 issue 5 class B for use in residential applications



### OVERVIEW

Light source	LED
Watts (W)	13
Lumen output (lm)	1 000
Efficacy (lm/W)	77
Color temperature (K)	3 000
CRI	90+

**5**<sup>yrs</sup>  
warranty

  
LED  
fixture

  
dimmable

**6**  
damp  
location



ICES  
005



**QUICK SHIP AND TECHNICAL SPECIFICATION TABLE **

**PICCOLO LED TRACK HEAD**

Order code	Model number	Watts (W)	Volts (VAC)	Color temp. (K) <sup>2</sup>	Lumen output (lm) <sup>3</sup>	Efficacy (lm/W)	CRI	Life L70 (hrs) <sup>4</sup>	Beam angle (°)	Shape	Finish	Power factor	THD (%)	Master case qty
69409	TLP-13-3090F-AJWH/CHOICE	13	120	3 000	1 000	77	90+	50 000	40	Round	White	>0.9	<15	24
69410	TLP-13-3090F-AJBK/CHOICE	13	120	3 000	1 000	77	90+	50 000	40	Round	Black	>0.9	<15	24

**PICCOLO KIT**

Order code	Model number	Watts (W)	Volts (VAC)	Color temp. (K) <sup>2</sup>	Lumen output (lm) <sup>3</sup>	Efficacy (lm/W)	CRI	Life L70 (hrs) <sup>4</sup>	Beam angle (°)	Shape	Finish	Power factor	THD (%)	Track rail length (ft)
69649	TLP-13-3090F-AJWH/CHOICE/STJ4-WH/ST26-WH	13	120	3 000	1 000	77	90+	50 000	40	Round	White	>0.9	<15	4
69650	TLP-13-3090F-AJBK/CHOICE/STJ4-BK/ST26-BK	13	120	3 000	1 000	77	90+	50 000	40	Round	Black	>0.9	<15	4

<sup>1</sup> **QUICK SHIP:** Product availability is subject to change without notice. Please contact your Stanpro customer service representative to confirm inventory levels at time of order.

<sup>2</sup> Typical color temperature range: +/- 5 %.

<sup>3</sup> Lumen values are derived from Energy Star reported data. Initial lumens range: +/- 10 %.

<sup>4</sup> Life hours are derived from IESNA LM-80-08 testing report and projected per IESNA TM-21-11 extrapolations.

**ACCESSORIES (order separately)**

Type
<a href="#">STJ Stanpro tracks</a>
<a href="#">Stanpro Track accessories</a>

**COMPATIBLE DIMMERS<sup>1</sup>**

Brand	Model
Cooper	RRD-6NA <sup>2</sup> , SLC03P <sup>2</sup> , AAL06
Leviton	6674 <sup>2</sup> , DSM10-1LZ, DDMX1
Lutron	CTCL-153P <sup>2</sup> , DVCL-253P <sup>2</sup> , PD-5NE, PD-6WCL, DVRP-253, SELV-300P, MACL-153P

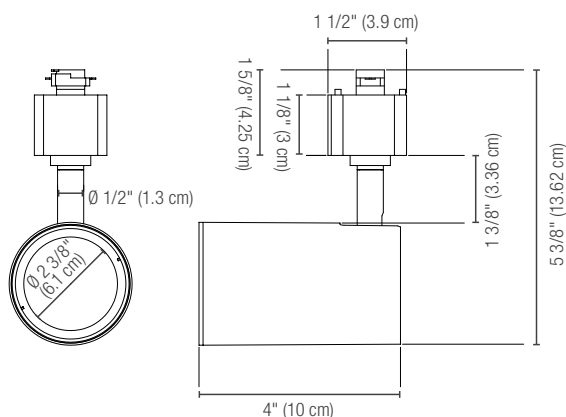
<sup>2</sup> Dimming range: 5%-100%

Dimming range: 10%-100%

<sup>1</sup> This table shows dimmers that have been tested and have demonstrated proper operation under normal conditions. Each installation being unique, various factors such as load, common neutrals or other electrical products on the circuit can, in certain instances, cause variance in system performance. Read and comply to the dimmer installation instructions. Consult dimming system manufacturer for additional support in operation. Some dimmers may require more than one product for stable operation. Stanpro recommends to use dimmers designed to work with LED products. Older dimmers designed for incandescent products may cause erratic operation.

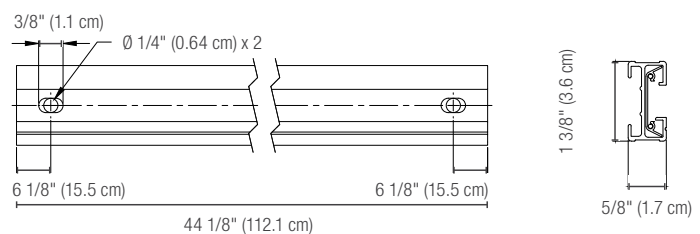
**DIMENSIONS AND WEIGHTS**

**PICCOLO LED TRACK HEAD**

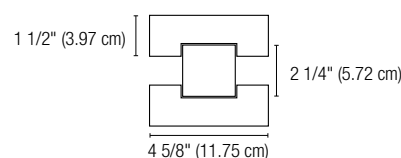


Net weight (lbs)	0.77
------------------	------

**4' STJ TRACK**



**FLOATING FEED**

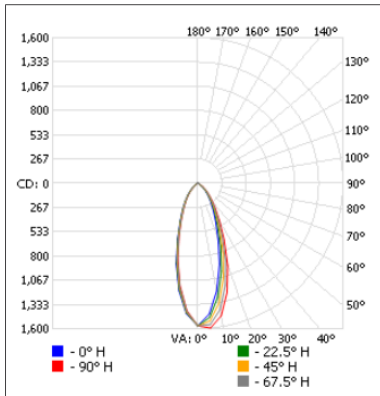


Data is based upon tests performed in a controlled environment. Actual performance can vary depending on operating conditions. All products are subject to change or may be discontinued any time without notice. Please contact your Stanpro customer service representative to confirm inventory levels at time of order.

**PHOTOMETRIC DATA<sup>1</sup>**

69409 • TLP-13-3090F-AJWH/CHOICE • 1009.3 lm

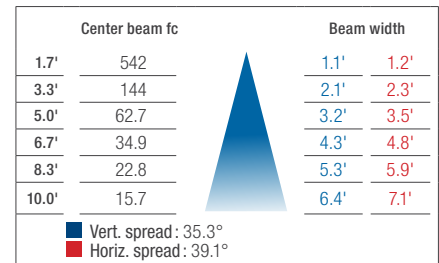
**Polar candela distribution**



**Zonal lumen summary**

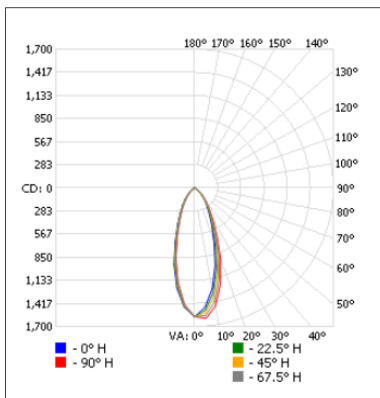
Zone	Lumens	% Fixture
0-30	639.7	63.4
0-40	806.6	79.9
0-60	948.4	94
60-90	33.6	3.3
70-100	19.1	1.9
90-120	9.4	0.9
0-90	982.0	97.3
90-180	27.3	2.7
0-180	1 009.3	100

**Illuminance at a distance**



69410 • TLP-13-3090F-AJBK/CHOICE • 982.3 lm

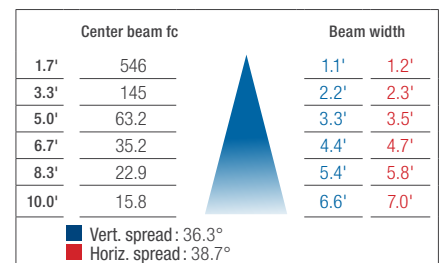
**Polar candela distribution**



**Zonal lumen summary**

Zone	Lumens	% Fixture
0-30	651.1	66.3
0-40	816.9	83.2
0-60	948.2	96.5
60-90	8.7	0.9
70-100	6.1	0.6
90-120	8.4	0.9
0-90	956.9	97.4
90-180	25.4	2.6
0-180	982.3	100

**Illuminance at a distance**



<sup>1</sup> Complete IES files available on our website.

Data is based upon tests performed in a controlled environment. Actual performance can vary depending on operating conditions. All products are subject to change or may be discontinued any time without notice. Please contact your Stanpro customer service representative to confirm inventory levels at time of order.