

LED WALL SCONCE - TRADITIONAL

1, 2, 3 or 4 modules

Our LED Wall Sconces adapt to a variety of applications, as they are available in several different sizes and color temperatures of 3 000 K and 4 000 K. These luminaires operate on line voltage and provide a diffused direct lighting, as well as a 120° angled upward and downward lighting. These Wall Sconce Luminaires come equipped with double-sided frosted lenses and depending on the desired look, they can be installed with a glossy or matte lens finish.

FEATURES AND SPECIFICATIONS

• Construction

Finish

- Brushed Nickel Finish
- Single, Double, Triple and Quadruple Module
- Frosted double-sided lens – Glossy or matte finish

Mounting

Easy mounting with mounting palte and installation gear included

• Technical specifications

- 120 VAC
- 10, 20, 30 and 40 W
- Forward and phase dimming
- Suitable for damp location
- IP44

• Compliances

- ETL
- Meets requirements of ICES-005 Class B
- FCC
- Energy Star



OVERVIEW

Light source	LED
Watts (W)	10 - 40
Lumen output (lm)	628 - 2 579
Efficiency (lm/W)	61 - 67
Color temperature (K)	3 000, 4 000
CRI	90



QUICK SHIP AND TECHNICAL SPECIFICATION TABLE  ¹

Order code	Part number	ES (Yes/No)	Watts (W)	Volts (VAC)	Color temp. (K) ²	Lumen output (lm) ³	Efficiency (lm/W)	CRI	Life L70 (hrs) ⁴	Housing Finish	Lens Finish	Beam angle (°)	Dimming (Yes/No)	Power factor	THD (%)	Case qty (master)
Single																
65838	SVAN/SINGLE/10W/30K/BN/F/STD	Yes	10	120	3 000	628	63	90	50 000	Brushed nickel	Frosted	120	Yes	>0.9	<30	12
65839	SVAN/SINGLE/10W/40K/BN/F/STD	Yes	10	120	4 000	669	67	90	50 000	Brushed nickel	Frosted	120	Yes	>0.9	<30	12
Double																
65840	SVAN/DOUBLE/20W/30K/BN/F/STD	Yes	20	120	3 000	1 266	63	90	50 000	Brushed nickel	Frosted	120	Yes	>0.9	<30	12
65841	SVAN/DOUBLE/20W/40K/BN/F/STD	Yes	20	120	4 000	1 344	67	90	50 000	Brushed nickel	Frosted	120	Yes	>0.9	<30	12
Triple																
65842	SVAN/TRIPLE/30W/30K/BN/F/STD	Yes	30	120	3 000	1 917	64	90	50 000	Brushed nickel	Frosted	120	Yes	>0.9	<30	6
65843	SVAN/TRIPLE/30W/40K/BN/F/STD	Yes	30	120	4 000	2 023	67	90	50 000	Brushed nickel	Frosted	120	Yes	>0.9	<30	6
Quadruple																
65844	SVAN/QUAD/40W/30K/BN/F/STD	Yes	40	120	3 000	2 579	64	90	50 000	Brushed nickel	Frosted	120	Yes	>0.9	<30	6
65845	SVAN/QUAD/40W/40K/BN/F/STD	Yes	40	120	4 000	2 422	61	90	50 000	Brushed nickel	Frosted	120	Yes	>0.9	<30	6

¹ **QUICK SHIP:** Product availability is subject to change without notice. Please contact your Stanpro customer service representative to confirm inventory levels at time of order.

² Typical color temperature range: +/- 5 %.

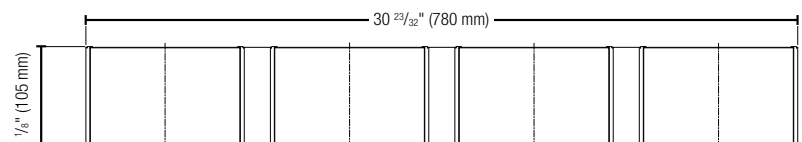
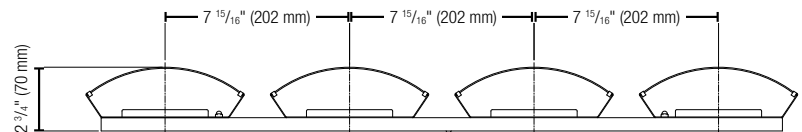
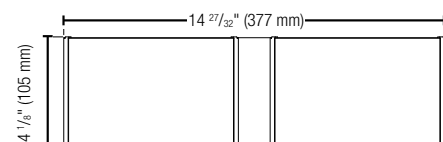
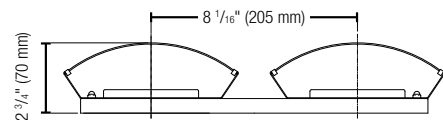
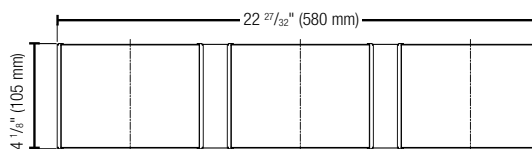
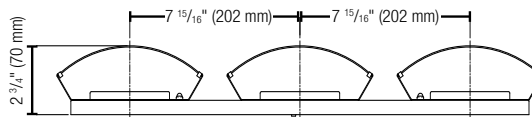
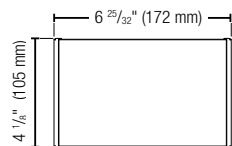
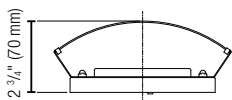
³ Lumen values are derived from photometric testing. Initial lumens range: +/- 10 %.

⁴ Life hours are derived from IESNA LM-80-08 testing report and projected per IESNA TM-21-11 extrapolations.

ACCESSORIES (order separately)

Order code	Part number	Type	Finish / color	Compatible with	Case qty (inner/master)
65959	SVAN/LENS/F/STD	Lens for modular vanity and wall sconce	Frosted	65838, 65839, 65840, 65841, 65842, 65843, 65844, 65845	10/200

DIMENSIONS

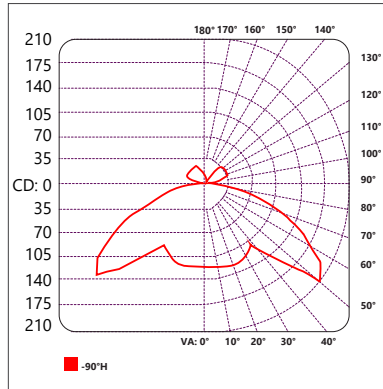


Data is based upon tests performed in a controlled environment. Actual performance can vary depending on operating conditions. All products are subject to change or may be discontinued any time without notice.

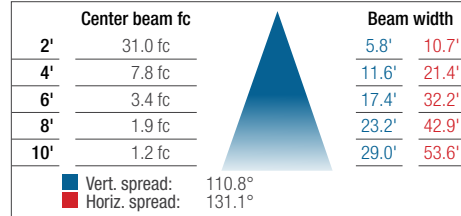
PHOTOMETRIC DATA¹

65838

Polar candela distribution

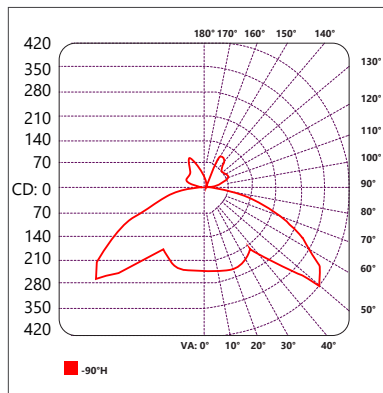


Illuminance at a distance

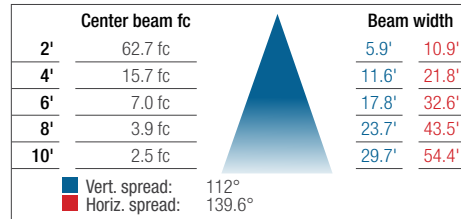


65840

Polar candela distribution

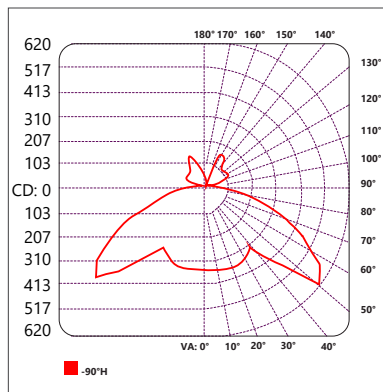


Illuminance at a distance

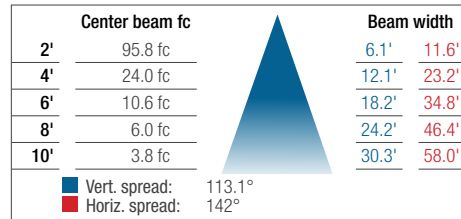


65842

Polar candela distribution



Illuminance at a distance



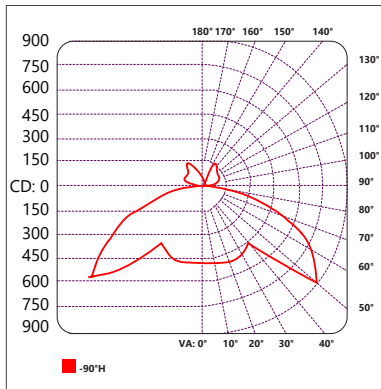
¹ Complete IES files available on our website.

Data is based upon tests performed in a controlled environment. Actual performance can vary depending on operating conditions. All products are subject to change or may be discontinued any time without notice.

PHOTOMETRIC DATA¹ (cont'd)

65844

Polar candela distribution



Illuminance at a distance

	Center beam fc	Beam width	
2'	122.2 fc	5.5'	1.2'
4'	30.6 fc	11.0'	2.4'
6'	13.6 fc	16.6'	3.6'
8'	7.6 fc	22.1'	4.8'
10'	4.9 fc	27.6'	6.0'

■ Vert. spread:	108.1°
■ Horiz. spread:	33.6°

¹ Complete IES files available on our website.

Data is based upon tests performed in a controlled environment. Actual performance can vary depending on operating conditions. All products are subject to change or may be discontinued any time without notice.