

CDF-L

HAZARDOUS LOCATION FLOOD LUMINAIRE

Class I, Division 2, Groups A, B, C, D

Class II, Division 2, Groups F, G

Class III

Non recessed Marine luminaires, outside type (salt water)

The CDF-L Hazardous Location LED flood luminaire is designed for installations where moisture, dirt, dust, corrosion and vibration may be present, or in NEMA 3 and 4X locations where wind, water, snow or high ambient can be expected. The CDF-L is also NEC/CEC certified to be used in hazardous environments where there is presence of flammable vapours or gases and combustible dusts.

FEATURES AND SPECIFICATIONS

• Construction

Housing

Rugged and resilient housing made of a copper-free aluminum, corrosion resistant casting, with separated driver compartment for improved thermal management. All exposed fasteners are quality stainless steel as well as high temperature quality silicone gasketing. Available in a grey casting color and a superior electrostatic powder coating.

Temperature ratings

Based on the surface temperature of the fixture:

- Class I, Division 2, Class II, Division 2 & Class III are rated T4A (will not exceed 120°C)

Ambient operating temperature

-40°C to +60°C

Ambient operating humidity

5% ~ 95% RH

Mounting options

The CDF-L series comes standard with a pendant mount however in option, ceiling and wall mounting are available.

Optics

Comes standard with a thermal shock and impact resistant tempered glass lens and is available in a clear finish with a 120° beam angle.

• Electrical

Available in either **S1** (80 W), **S2** (100 W) or **S3** (150 W) packages with a lumen per watt ratio of 118 to 130 lm/W. Driver allows input voltage from 120-277 V 50/60 Hz or 347-480 V 50/60 Hz. All drivers are non-dimmable and have 4 kV integrated transient surge protection with a power factor >0.95. Durable high powered OSRAM LEDs with solder-less board connections for shock and vibration resistance. The CDF-L is offered in either 4 000 or 5 000 K color temperatures with a color rendering index (CRI) >70.

• NEC/CEC Standards

NEC500/CEC Section 18: Existing plants

- Hazloc D :
 - Class I, Division 2, Groups A, B, C, D
 - Class II, Division 2, Groups F, G
 - Class III

NEC505/CEC Section 18 Zones: New plants

- Hazloc D :
 - Class I, Zone 2, Group IIC
 - Zone 22

• Compliances

- Meets requirements of ICES-005 issue 4 for class A products
- 5G vibration resistant in compliance with IEC60598-1 standard, CL-4.20
- IP66
- IK08
- UL 1598A
- UL 1598
- UL 8750
- CSA C22.2 No.137
- CSA C22.2 No.30-M1986
- CSA C22.2 No.25-1966
- CSA C22.2 No.250.0
- CSA C22.2 No.250.13



OVERVIEW

Light source	LED
Watts (W)	80 - 150
Lumen output (lm)	9 979 - 19 500
Efficacy (lm/W)	118 - 130
Color temperature (K)	4 000, 5 000
CRI	70
Weight (lbs)	33.5 - 34.2



quick ship



LED fixture



wet location



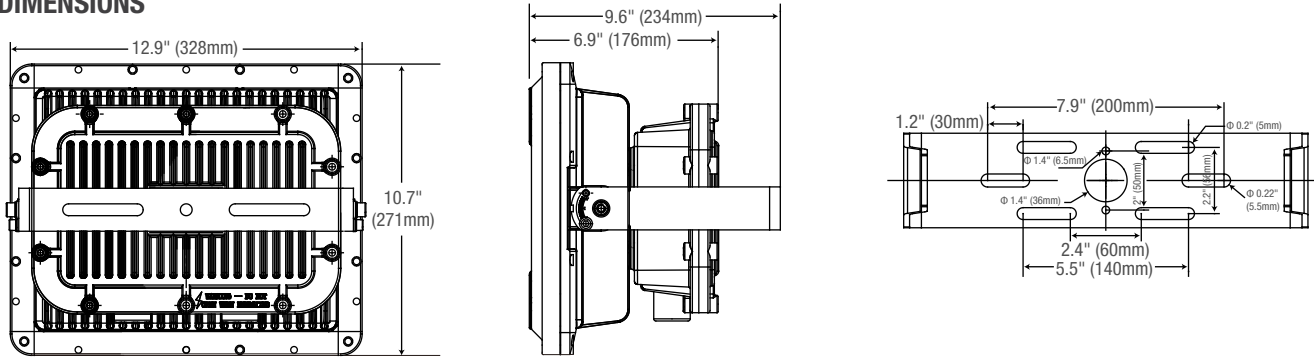
ICES 005



IK08

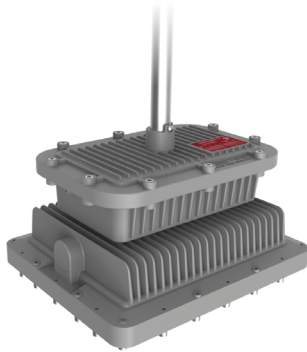


DIMENSIONS



MOUNTING

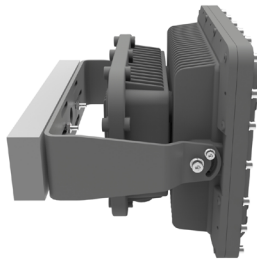
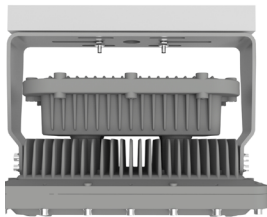
PENDANT (standard)



ACCESSORIES REQUIRED FOR OPTIONAL MOUNTING

CEILING MOUNT
BKT761-FL

WALL MOUNT
BKT761-FL



Data is based upon tests performed in a controlled environment. Actual performance can vary depending on operating conditions. All products are subject to change or may be discontinued any time without notice.

QUICK SHIP AND TECHNICAL SPECIFICATION TABLE 🕒¹

Part number	Watts (W)	Color temp. (K) ²	Lumen output (lm) ³	Efficacy (lm/W)	CRI	Life L70 (hrs) ⁴	Tested hours LM-80 (hrs) ⁴	LED current (mA)	Power factor	THD (%)	BUG	Lens type	Beam angle (°)	Case qty (master)
120-277 V														
CDF-LS2-W-A/5K120T	100	5 000	13 000	130	70	>60 000	10 000	525	0.99	15	B4-U0-G1	Clear	120	1
CDF-LS2-W-D/4K120D	100	4 000	9 596	96	70	>60 000	10 000	525	0.99	15	B4-U0-G1	Diffuse	120	1
347-480 V														
CDF-LS1-H-D/4K120T	80	4 000	9 979	125	70	>60 000	10 000	525	0.90	10	B4-U0-G1	Clear	120	1
CDF-LS3-H-D/4K120T	150	4 000	17 718	118	70	>60 000	10 000	480	0.93	11	B4-U0-G1	Clear	120	1
CDF-LS3-H-A/4K120T	150	4 000	17 718	118	70	>60 000	10 000	480	0.93	11	B4-U0-G1	Clear	120	1
CDF-LS1-H-D/5K120T	80	5 000	10 400	130	70	>60 000	10 000	525	0.90	10	B4-U0-G1	Clear	120	1
CDF-LS3-H-A/5K120T	150	5 000	19 500	130	70	>60 000	10 000	480	0.93	11	B4-U0-G1	Clear	120	1

¹ **QUICK SHIP:** Product availability is subject to change without notice. Please contact your Stanpro customer service representative to confirm inventory levels at time of order.

² Typical color temperature range: +/- 5 %.

³ Lumen values are derived from photometric testing. Initial lumens range: +/- 10 %.

⁴ Life hours are derived from IESNA LM-80-08 testing report and projected per IESNA TM-21-11 extrapolations.

ACCESSORIES (order separately)

Part number	Type
BKT761-FL	U bracket



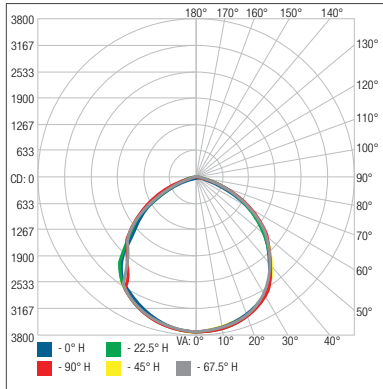
BKT761-FL
U bracket

Data is based upon tests performed in a controlled environment. Actual performance can vary depending on operating conditions. All products are subject to change or may be discontinued any time without notice.

PHOTOMETRIC DATA¹

CDF-LS1-W-D/4K120T • 10 059 lm

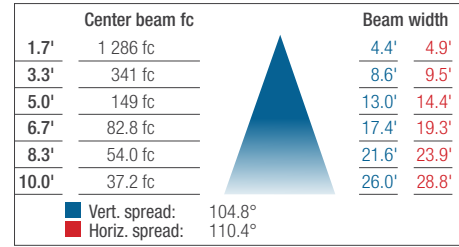
Polar candela distribution



Zonal lumen summary

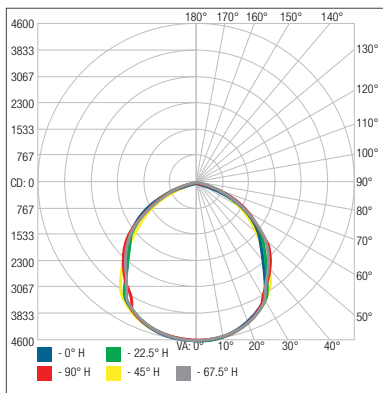
Zone	Lumens	% Fixture
0-30	2 944.5	30.3%
0-40	4 847.5	49.8%
0-60	8 308.2	85.4%
60-90	1 420.3	14.6%
0-90	9 728.5	100%

Illuminance at a distance



CDF-LS2-W-D/4K120T • 12 339 lm

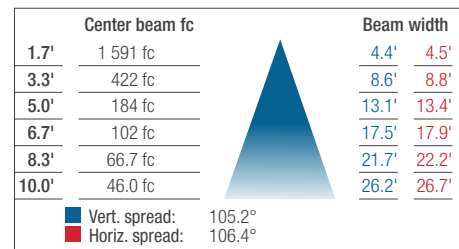
Polar candela distribution



Zonal lumen summary

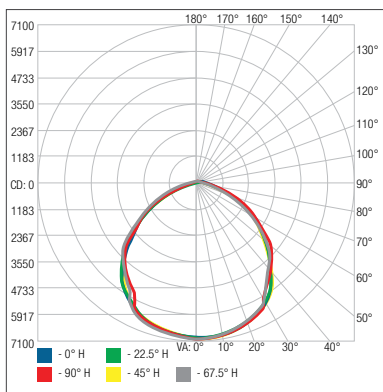
Zone	Lumens	% Fixture
0-30	3 628.6	30.8%
0-40	5 895.4	50.1%
0-60	10 016.5	85.1%
60-90	1 753.7	14.9%
0-90	11 770.2	100%

Illuminance at a distance



CDF-LS3-W-D/4K120T • 18 122 lm

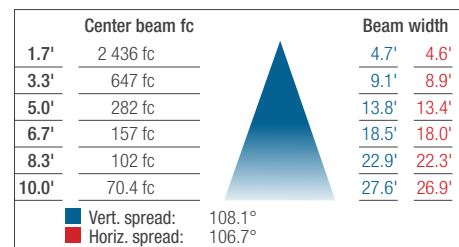
Polar candela distribution



Zonal lumen summary

Zone	Lumens	% Fixture
0-30	5 560.2	30.3%
0-40	9 080.5	49.4%
0-60	15 598.5	84.9%
60-90	2 772.8	15.1%
0-90	18 371.4	100%

Illuminance at a distance



¹ Complete IES files available on our website.

Data is based upon tests performed in a controlled environment. Actual performance can vary depending on operating conditions. All products are subject to change or may be discontinued any time without notice.