

F2TSB

FLUORESCENT LIGHT FIXTURE SURFACE MOUNT "TROFFER"

2, 3 or 4 Lamps

Stanpro's F2TSB shallow surface mounted troffer is less than 4" deep and makes it the perfect solution for commercial applications where uniform and efficient lighting is required. The hinged door with rotary cam latches assures ease of maintenance. The mounting of the F2TSB is surface and it is available in either 1x4, 2x2 or 2x4, using T5, T5HO or T8 lamps.

FEATURES AND SPECIFICATIONS

- **Power range**

- 17 W to 32 W T8 lamp
- 14 W to 28 W T5 lamp
- 24 W to 54 W T5HO lamp

- **Housing and finishing**

The shallow body is made of die-formed cold rolled steel, post-painted high-gloss white. Comes complete with integrated earthquake clips.

- **Ballast**

T5 and T5HO

Our fixtures come standard with electronic program start ballasts.

T8

Our fixtures come standard with electronic instant start ballasts (not intended for use with occupancy sensors).

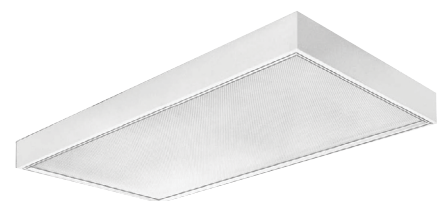
Dimming ballasts and other ballast types are optional.

- **Lens and louvers**

Prismatic acrylic K-12 pattern (0.1 inch) is standard.

OVERVIEW

| | |
|--------------|-------------|
| Light source | Fluorescent |
| Watts (W) | 14 - 54 |



ORDERING GUIDE

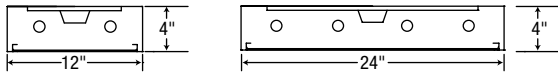
| Series | Size | Number of lamps | Lamp type | Watts (W) | Operation | Volts (V) | Options |
|--------|-----------|-----------------|-----------|-----------|-----------------|-----------------------------------|--|
| F2TSB | 1 - 1'x4' | 2 - 2 lamps | T8 | 32 | Blank - AC only | A - 120 H - 347 W - 120-227 | DIM1 - 0-10 VDC dimming ballast 120 V, 120-277 V (347 V available for T8 lamps only) DIM2 - Line voltage dimming, ballast 120 V, 120-277 V DALI1 - Digital addressable lighting interface driver (not available in 347 V) LBF - Low ballast factor <0.85 (T8 only) HBF - High ballast factor >1.0 (T8 only) PSP - Program start parallel ballast FRZ² - Low ambient starting temperature (-29°C) |
| | | | T5 | 28 | | | |
| | | | T5H0 | 54 | | | |
| | 2 - 2'x2' | 4 - 4 lamps | T8 | 17 | | | |
| | | | T5 | 14 | | | |
| | | | T5H0 | 24 | | | |
| | 4 - 2'x4' | 2 - 2 lamps | T8 | 32 | | | |
| | | 3 - 3 lamps | T5 | 28 | | | |
| | | 4 - 4 lamps | T5H0 | 54 | | | |

¹ Not available with the 1'x4'.
² Not available with Program Start T8 ballasts.
NOTE: Due to the fact that not all lamp/ballast combinations are compatible, please consult factory.

DIMENSIONS

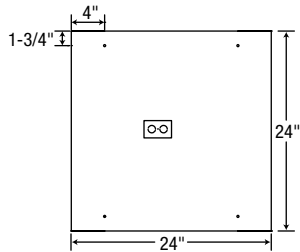
CROSS SECTION VIEW

1' x 4' et 2' x 2'



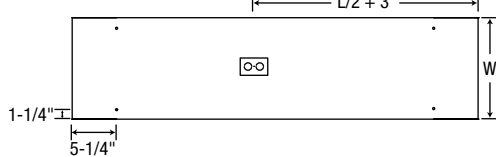
BASE VIEW

2' x 2'



BASE VIEW

2' x 4'



Data is based upon tests performed in a controlled environment. Actual performance can vary depending on operating conditions. All products are subject to change or may be discontinued any time without notice.