

PROJECT:

DISTRIBUTOR:

DRAWN BY:

CATALOGUE #:

CONTRACTOR:

DATE:

TYPE:

PO:



STANPRO

SPEC SHEET

FEATURES AND SPECIFICATIONS

CIRCUITRY

- 120/347 V AC or 277 V AC, 60 Hz Input
- High efficiency, rapid recovery, precision control charging system
- Liquid-tight, momentary push button test switch
- Diagnostic/pilot LEDs for AC ON and CHARGE
- Fully automatic, current limited charger
- Temperature compensated
- Large magnum terminal screw type connectors for remote load connection
- Complete battery recharge in 24 hours
- Maintenance free, sealed lead acid battery which will provide the specified wattage for 30 minutes duration
- Optional automatic-testing, self-diagnostic charger board

BLUETOOTH CONTROL

- Integrated Bluetooth technology allows for controllable features via the Stanpro Genio App
- Controllable features include:
 - Instantly view and control individual lights and emergency devices
 - Easily group luminaires together and control them as a single unit
 - Schedule functional and discharge tests at a chosen time
 - Generate, view and share reports seamlessly with just a few clicks

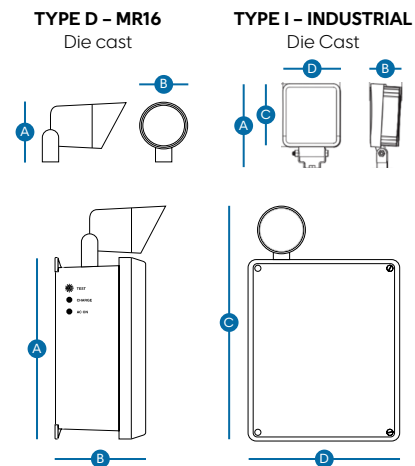
MECHANICAL

- Fully gasketed, reinforced, non-metallic housing will not corrode or rust from water exposure
- NEMA4X / EEMAC4X rated design
- 120 V AC line cord with liquid-tight strain relief supplied standard
- Grey finish standard
- Lamp heads include weatherproof die cast metal MR16 and high output industrial heads.
- Top head mounting is standard
- Normal operating temperature +10°C to +25°C and -20°C to +25°C with the HTR option

COMPLIANCES

- CSA Certified to C22.2 #141-15
- Meets requirements of ICES-005

TECHNICAL DRAWINGS



Type	A	B	C	D
TYPE D - MR16 Die Cast	3 3/4" (9.53 cm)	2 1/4" (5.72 cm)	-	-
TYPE I - INDUSTRIAL Die Cast	3 3/4" (9.53 cm)	2 1/4" (5.72 cm)	-	-
SLBIF - 1	11 5/8" (29.54 cm)	4 1/4" (10.72 cm)	16 1/8" (40.97 cm)	9 3/8" (23.9 cm)
SLBIF - 2	13 1/2" (34.44 cm)	5 1/4" (13.26 cm)	18" (45.87 cm)	11 3/8" (29.05 cm)
SLBIF - 3	15 1/2" (39.37 cm)	6 1/4" (15.75 cm)	20" (50.8 cm)	13 1/2" (34.24 cm)
SLBIF - 4	19 5/8" (49.86 cm)	8 3/4" (21.88 cm)	21 1/8" (53.67 cm)	17 5/8" (44.73 cm)

* Please refer to the product web page to view detailed drawings by size.



TYPICAL SPECIFICATION

Supply and install Stanpro SLBIF. The unit shall be rated 120 V, 277 V or 347 V, 60 Hz constructed of durable polycarbonate housing and be CSA listed to C22.2 141-15 Nema 2, 3, 3R, 4, 4X, 5, 12, 12K, NSF 2 and be ICES 005 compliant. The unit shall have an output of: ___V and ___W and come complete with (2) x ___ W LED heads producing (___) lumens each. The charge voltage factory set to ± 1% tolerance. High efficiency, rapid recovery, precision control charging system shall be employed to promote long battery life and reduce the potential for grid corrosion. The charger shall provide a continuous high charge to recharge the battery, when the battery is at full capacity, the charger will shut-off. Periodically the charger shall provide a pulse of energy to keep the battery at full voltage. The pulse charger shall be precisely regulated and shall charge the battery in relation to its temperature, state of charge and input voltage fluctuations. The charger shall be current limited, temperature compensated, short-circuit proof and reverse polarity protected. The unit shall be furnished with an electronic lockout circuit, which will connect the battery when the AC circuit is activated, and an electronic brownout circuit, which will activate the emergency lights when utility power dips below 75% of nominal voltage. A low voltage battery protection circuit shall be provided and will disconnect the load when the battery reaches the end of discharge. The Stanpro battery shall come complete with an auto diagnostic micro-controller board and shall supply the rated load for a minimum of a 1/2 hour to 87.5% of the rated battery voltage. The unit shall also feature integrated Bluetooth connectivity for monitoring and configuration of the system, allowing users to view system status and perform diagnostics via a mobile app. The Stanpro battery unit shall come complete with the Auto Test function. The automated testing performed by the Stanpro auto test system has been designed to comply with all of the requirements of the National Fire Code. Every month a 5 minute discharge and diagnostic test checks the operational status of the unit. Every 12 months, this test is extended to the full 30 minute, code required duration. This ensures that the battery charger is recharging the battery in accordance with code requirements. The unit shall be Stanpro model: SLBIF _____

ORDERING GUIDE

Dropdown selections may not display correctly in web browsers. For full functionality, please download the file to use all features.

SLBIF					GY		
Series	Volts (V)	Watts	Head/Lamp	Lamp	Color	Input Voltage (VAC)	Options
SLBIF	06 - 6 12 - 12 24 - 24	See model ratings below	00 - No Heads 1D - One MR16 Weather-Proof 2D - Two MR16 Weather-Proof One 1I - Industrial 2I - Two Industrial	See lamp list below	GY - Grey	Blank - 120/347 E - 277	A, ACTB, AT, AUD ¹ , AUE, DCTB, FD6, HTR ² , LD, OBM, RFS, TD, TLP, V, BT (Bluetooth Genio option)

¹ Only available with AT and BT.
² Specify AC voltage.

LAMP SELECTION

	6 V	12 V	24 V
MR16 - Small head c/w MR16 or LED lamp			
LED	4LR, 5LA	4LR, 5LA, 6LA, 7LA	4LR, 5LA, 6LA, 7LA
Industrial - High Output			
LED		5LJ, 9LJ, 14LJ, 30LJ	5LJ, 9LJ, 14LJ, 30LJ

Note: Due to cabinet/space limitations, not all options are available for all models in any given combination. Please consult with your factory representative regarding specific options and exact cabinet dimension information.

LUMEN TABLE

Watts	Lumens
4W LR	388
5W LJ	590
5W LA	435
6W LA	507
7W LA	652

LUMEN TABLE INDUSTRIAL

Watts	Lumens
5W LJ	630
9W LJ	1100
14W LJ	1460
30W LJ	2578

EMERGENCY LIGHTING OPTIONS

Option	Description
A	Ammeter
ACTB	AC Terminal Block (line cord delete)
AT	Automatic test self-diagnostic
AUD	Audible alarm
AUE	Audible emergency
DCTB	DC Terminal Block
FD6	6 Circuit Fused Internal Distribution
HTR	Internal thermostatically controlled battery heater (specify voltage)
LD	Lamp disconnect (internal)
OBM	Octagon Box Mount (line cord delete)
RFS	Radio frequency suppression
TD	Time delay
TLP	Twist Lock Plug
V	Voltmeter

MODEL RATINGS

Model	Volts (V)	Wattage Capacities (W)				Size ¹
		30 min.	60 min.	90 min.	120 min.	
SLBIF06036	6	36	18	12	9	1
SLBIF06050	6	50	25	16	12	1
SLBIF06072	6	72	36	24	18	1
SLBIF06100	6	100	50	33	25	1
SLBIF06160	6	160	80	53	40	2
SLBIF06180	6	180	90	60	45	2
SLBIF12036	12	36	18	12	9	1
SLBIF12050	12	50	25	16	12	1
SLBIF12072	12	72	36	24	18	1
SLBIF12100	12	100	50	33	25	1
SLBIF12160	12	160	80	53	40	2
SLBIF12200	12	200	100	66	50	2
SLBIF12250	12	250	125	83	62	3
SLBIF12360	12	360	180	120	90	3
SLBIF24144	24	144	72	48	36	2
SLBIF24200	24	200	100	66	50	2
SLBIF24320	24	320	160	106	80	2
SLBIF24350	24	350	175	117	88	3
SLBIF24550	24	550	275	184	138	4
SLBIF24720	24	720	360	240	180	4

¹The size of the cabinet might change depending of the chosen options.
Please consult with your factory representative regarding exact cabinet dimension information.

WIREGUARD¹

		Model Number	Dimensions (in)
Without head	Cabinet 1	WGD590-V2	14.5 x 11.25 x 5.5
	Cabinet 2	WGD600	20.25 x 17.25 x 8.5
With head(s)²	Cabinet 1	WGD510-V2	17.25 x 17.25 x 7
	Cabinet 2	WGD600	19.75 x 19.75 x 7.25

¹Please contact your customer service representative for more information.

²For 1 heads, please contact your customer service representative for more information.

SMART OPTION

Option	Description
BT	Genio Bluetooth

SPACING GUIDE

Mounting Height	Spacing Center to Center (ft)				1 HEAD - Spacing Center to Center (ft)			
	4LR	5LA	6LA	7LA	5 W	9 W	14 W	30 W
8 ft	76	81	94	108	113	165	199	250
10 ft	79	79	93	106	110	160	194	260
15 ft	66	62	82	96	99	147	178	239
20 ft	53	49	73	87	86	133	164	223

LEXAN GUARD

Mounting Type	Number of Heads	Model Number	Dimension (in)
Wall Mount	1,2	PGD111	19.75x14x8

Mounting Type	Number of Heads	Input Voltage	Model Number	Dimension (in)
Wall Mount	0	06V036W	PGD107	14.5x11.25x5.5
		06V050W	PGD107	14.5x11.25x5.5
		06V072W	PGD107	14.5x11.25x5.5
		06V100W	PGD107	14.5x11.25x5.5
		12V036W	PGD107	14.5x11.25x5.5
		12V050W	PGD107	14.5x11.25x5.5
		12V072W	PGD107	14.5x11.25x5.5
		12V100W	PGD107	14.5x11.25x5.5
		06V160W	PGD111	19.75x14x8
		06V180W	PGD111	19.75x14x8
		12V160W	PGD111	19.75x14x8
		12V200W	PGD111	19.75x14x8
		12V250W	PGD111	19.75x14x8
		12V360	PGD111	19.75x14x8
		24V144W	PGD111	19.75x14x8
		24V200W	PGD111	19.75x14x8
		24V320W	PGD111	19.75x14x8
		24V350W	PGD111	19.75x14x8