

PROJECT:
DISTRIBUTOR:
DRAWN BY:

CATALOGUE #:
CONTRACTOR:

DATE:
TYPE:
PO:



LOW VOLTAGE TAPE SYSTEMS MOUNTING ACCESSORIES

STANPRO

SPEC SHEET

EXTRUSIONS, LENSES & END CAPS

FEATURES AND SPECIFICATIONS

CONSTRUCTION

Physical Characteristics

- Made of ALCOA 6063 or 6163 T-5 aluminum alloy increasing heat dissipation
- Silver and black finishes
- Clear, black, frosted, opal or diffused lenses
- Channels in 8' lengths
- End caps available for an aesthetically finished extrusion
- Meets North American woodworking standards. Suitable for use in a clothes closet storage area

Mounting

- Surfaced, suspended and recessed (into wall or ceiling, cabinet or millwork)
- Compatible with multiple installation accessories
- Choice of widths to fit most LV LED tapes
- Compatible with Stanpro's [Low Voltage LED Tapes](#): IP22, IP67, and RGB tapes

PERFORMANCE DATA

- Increases the lifetime of the LED tape
- Suitable for dry, damp and wet locations



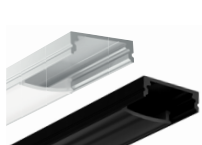
QUICK SHIP AND TECHNICAL SPECIFICATION TABLE

EXTRUSION

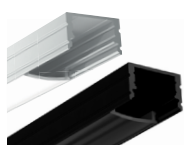
Type	Order Code	Model Number	Series	Type	Finish / Color	Length		Width		Height		Master Case Qty	Figure
						(ft.)	(m)	(in.)	(mm)	(in.)	(mm)		
	65865	EXTRUSION/100/8'/ALUM/STD	100 ^{1,2}	Sleek	Silver	8	2.4	3/4	19	1/4	6	10	A
	70110	EXTRUSION/100/8'/BLK	100 ^{1,2}	Sleek	Black	8	2.4	3/4	19	1/4	6	10	A
	65866	EXTRUSION/200/8'/ALUM/STD	200 ²	Deep	Silver	8	2.4	3/4	19	7/16	12	10	B
	70111	EXTRUSION/200/8'/BLK	200 ²	Deep	Black	8	2.4	3/4	19	7/16	12	10	B
	65867	EXTRUSION/210/RECESSED/8'/ALUM/STD	210 ²	Recessed	Silver	8	2.4	11/32	26	7/16	12	10	C
	70112	EXTRUSION/210/8'/BLK	210 ²	Recessed	Black	8	2.4	11/32	26	7/16	12	10	C
	65868	EXTRUSION/400/8'/ALUM/STD	400 ²	Versatile	Silver	8	2.4	3/4	19	21/32	17	10	D
	65870	EXTRUSION/500/CORNER/8'/ALUM/STD	500 ²	Corner	Silver	8	2.4	25/32	20	25/32	20	10	E
	66678	EXTRUSION/600/8'/ALUM/STD	600 ²	Heatsink	Silver	8	2.4	1/2	13	3/32	2	20	F

¹The thickness of this extrusion does not allow to use Stanpro's connectors inside. Soldering is required when using this extrusion.

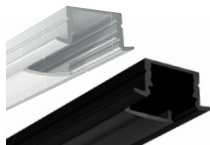
²To use with RGB and IP67 LV LED tapes, soldering is required due to the thickness which does not allow the use of Stanpro's connectors inside.



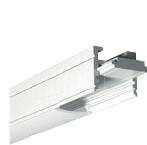
A



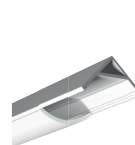
B



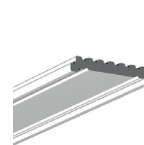
C



D



E



F

LENS

Type	Order Code	Model Number	Type	Finish	Length		Width		Compatible With Series	Master Case Qty	Figure
					(ft.)	(m)	(in.)	(mm)			
	65871	LENS/8'/CLEAR/STD	Flat	Clear	8	2.4	23/32	18	100, 200, 210, 400	20	A
	65872	LENS/8'/OPAL/STD	Flat	Opal	8	2.4	23/32	18	100, 200, 210, 400	20	B
	65873	LENS/8'/FROSTED/STD	Flat	Frosted	8	2.4	23/32	18	100, 200, 210, 400	20	C
	65874	LENS/8'/DIFFUSED/STD	Flat	Diffused	8	2.4	23/32	18	100, 200, 210, 400	20	D
	65875	LENS/8'/ROUNDED/CLEAR/STD	Rounded	Clear	8	2.4	31/32	25	500	20	E
	65876	LENS/8'/ROUNDED/FROSTED/STD	Rounded	Frosted	8	2.4	31/32	25	500	20	F
	65877	LENS/8'/ROUNDED/OPAL/STD	Rounded	Opal	8	2.4	31/32	25	500	20	G
	70118	LENS/8'/CLEAR/BLACK	Flat	Black	8	2.4	23/32	18	100, 200, 210	20	H



A



B



C



D



E



F














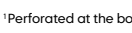



G

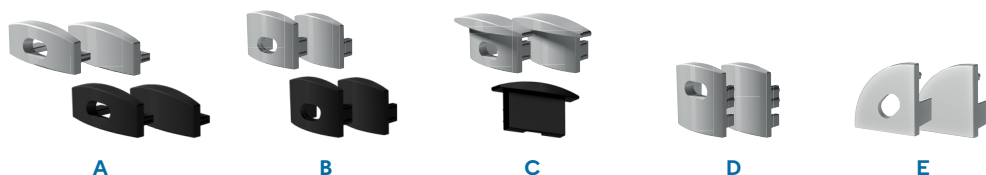


H

END CAP (10 PACK)

Type	Order Code	Model Number	Type	Color	Compatible With Series	Master Case Qty	Figure
	65896	EXTRUSION/100/ENDCAP/HOLE/STD	Perforated	Silver	100	50	A
	65897	EXTRUSION/100/ENDCAP/PLAIN/STD	Plain	Silver	100	50	A
	70113	EXTRUSION/100/ENDCAP/HOLE/BLK	Perforated	Black	100	50	A
	70114	EXTRUSION/100/ENDCAP/PLAIN/BLK	Plain	Black	100	50	A
	65898	EXTRUSION/200/ENDCAP/HOLE/STD	Perforated	Silver	200	50	B
	65899	EXTRUSION/200/ENDCAP/PLAIN/STD	Plain	Silver	200	50	B
	70115	EXTRUSION/200/ENDCAP/HOLE/BLK	Perforated	Black	200	50	B
	70116	EXTRUSION/200/ENDCAP/PLAIN/BLK	Plain	Black	200	50	B
	65900	EXTRUSION/210/ENDCAP/HOLE/STD	Perforated	Silver	210	50	C
	65901	EXTRUSION/210/ENDCAP/PLAIN/STD	Plain	Silver	210	50	C
	70117	EXTRUSION/210/ENDCAP/BLK	Perforated ¹	Black	210	50	C
	65902	EXTRUSION/400/ENDCAP/HOLE/STD	Perforated	Silver	400	50	D
	65903	EXTRUSION/400/ENDCAP/PLAIN/STD	Plain	Silver	400	50	D
	65906	EXTRUSION/500R/ENDCAP/HOLE/STD	Perforated	Silver	500	50	E
	65907	EXTRUSION/500R/ENDCAP/PLAIN/STD	Plain	Silver	500	50	E

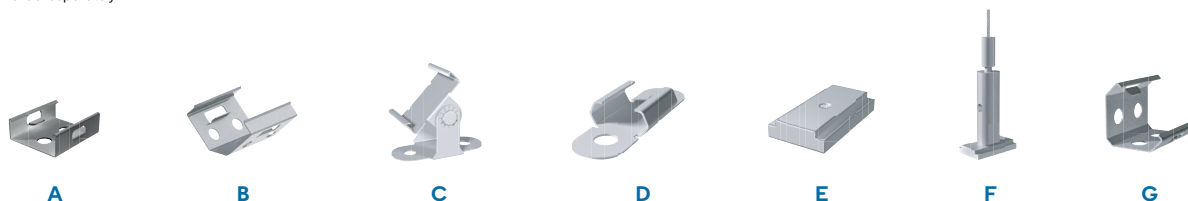
¹Perforated at the bottom to allow easy passage of wiring.



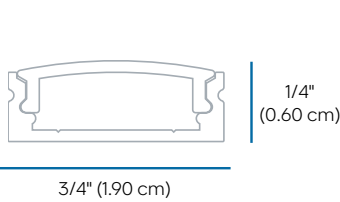
ACCESSORIES* FIXING CLIP (2 PACK)

Order Code	Model Number	Type	Compatible With Series	Master Case Qty	Figure
65908	EXTRUSION/FIXCLIP/180/STD 2P	180°	100, 200, 210, 400	100	A
65909	EXTRUSION/FIXCLIP/45/STD 2P	45°	100, 200, 400	100	B
65910	EXTRUSION/FIXCLIP/ADJ/STD 2P	Adjustable	100, 200, 400	100	C
65911	EXTRUSION/FIXCLIP/INV/STD 2P	Invisible	400	100	D
65913	EXTRUSION/MAGNET/STD 2P	Magnet	400	100	E
65912	EXTRUSION/SUSPENSIONKIT/STD	Suspension Kit (single pack)	400	50	F
65914	EXTRUSION/FIXCLIP/500/CORNER/STD 2P	For corner	500	100	G

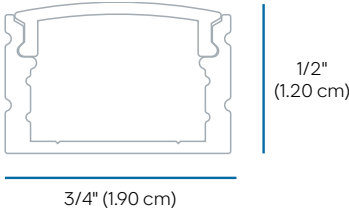
¹Order separately.



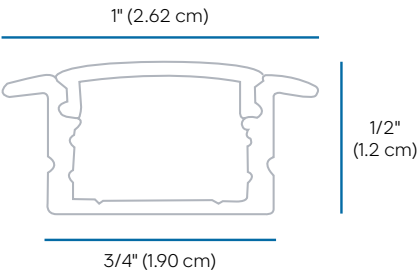
DIMENSIONS



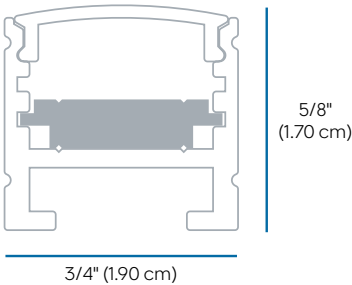
Series 100 with lens



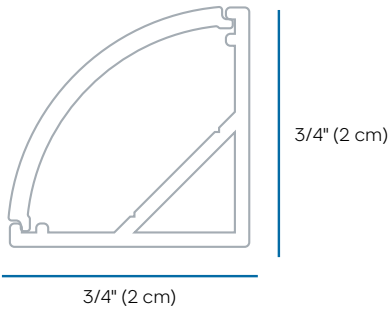
Series 200 with lens



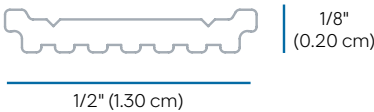
Series 210 with lens



Series 400 with lens



Series 500 with lens



Series 600