



Series Spec Sheet

SKYWALK

LED ARCHITECTURAL RECESSED LUMINAIRE

3 CCT AND 3 POWER SELECTABLE

With its slightly regressed lens detail and its clean straight lines, Stanpro's SKYWALK recessed luminaire offers a perfect alternative to standard panel luminaires. This architecturally looking luminaire delivers a uniform and soft illumination to light up any space. Featuring a 120-347V LED driver with the ability to change lumen output and color temperature, it is ideal for bringing a modern touch to new construction or for retrofitting many commercial and institutional spaces such as offices, schools, retail stores, etc.

FEATURES AND SPECIFICATIONS

• Construction

Physical Characteristics

- Low profile design with aluminum construction
- CCT and Power Select switches are placed on the driver box

Mounting

- Recessed

• Performance data

- Available in 3 500/4 000/5 000 K selectable color temperature
- 80+ CRI
- Electrical rating: 120-347 V
- Estimated life of over 176 000 hours to L70
- 0-10 V dimming standard
- 2 kV surge protection
- Operating temperature: -20 °C to 40 °C (-4 °F to 104 °F)

• Compliances

- cULus listed for damp locations
- DLC Premium
- Meets requirements of ICES-005 issue 5 class B for use in residential applications
- IC rated for direct contact with insulation

Conforms to:

- CAN/ULC-S102.3-07 Standard Method of fire test of light diffusers and lenses
- CAN/ULC-S102.2-10 Standard method of test for surface burning characteristics of flooring, floor coverings, and miscellaneous materials and assemblies



OVERVIEW

| | |
|-----------------------|----------------------|
| Light source | LED |
| Watts (W) | 25/30/35 30/40/50 |
| Lumen output (lm) | 3 141 - 6 487 |
| Efficacy (lm/W) | 125 |
| Color temperature (K) | 3 500/4 000/5 000 |
| CRI | 80+ |

QUICK SHIP AND TECHNICAL SPECIFICATION TABLE 🕒

| Order code | Model number | DLC unique ID | Watts (W) | Volts (VAC) | Color temp. (K) ¹ | Lumen output (lm) ^{2,3} | Efficacy (lm/W) | CRI | Life L70 (hrs) ⁴ | Tested hours LM-80 (hrs) ⁴ | Dimming (Yes/No) | Power factor | THD (%) | Master case qty ⁵ |
|--------------|--------------------|---------------|--------------|----------------|---------------------------------|-------------------------------------|--------------------|-----|--------------------------------|--|---------------------|--------------|------------|------------------------------|
| 2'x2' | | | | | | | | | | | | | | |
| 69344 | L3PNA-2LPS35P-Q/3C | S-6H3EF2 | 25/30/35 | 120-347 | 3 500/4 000/5 000 | 3 125/3 750/4 375 | 125 | 80+ | 176 000 | 10 000 | Yes | >0.9 | <20 | 2 |
| 2'x4' | | | | | | | | | | | | | | |
| 69345 | L3PNA-4LPS50P-Q/3C | S-MU3LKH | 30/40/50 | 120-347 | 3 500/4 000/5 000 | 3 750/5 000/6 250 | 125 | 80+ | 176 000 | 10 000 | Yes | >0.9 | <20 | 2 |

¹ Typical color temperature range: +/- 5 %.

² Lumen values are derived from photometric testing. Initial lumens range: +/- 10 %.

³ Lumen values are derived from DLC reported data at 3 500 K. Please refer to the LUMEN SPECIFICATION TABLE for more details on other color temperatures.

⁴ Life hours are derived from IESNA LM-80-08 testing report and projected per IESNA TM-21-11 extrapolations.

⁵ Standard packaging is 2 panels per master case without individual box.

LUMEN SPECIFICATION TABLE

| Order code | Model number | Watts (W) | 3 500 K | | 4 000 K | | 5 000 K | |
|--------------|--------------------|--------------|----------------------|--------------------|----------------------|--------------------|----------------------|--------------------|
| | | | Lumen output (lm) | Efficacy (lm/W) | Lumen output (lm) | Efficacy (lm/W) | Lumen output (lm) | Efficacy (lm/W) |
| 69344 | L3PNA-2LPS35P-Q/3C | 25 | 3 141 | 126 | 3 224 | 129 | 3 164 | 127 |
| | | 30 | 3 745 | 125 | 3 865 | 129 | 3 806 | 127 |
| | | 35 | 4 298 | 123 | 4 449 | 127 | 4 311 | 123 |
| 69345 | L3PNA-4LPS50P-Q/3C | 30 | 3 754 | 125 | 3 864 | 129 | 3 840 | 128 |
| | | 40 | 5 000 | 125 | 5 193 | 130 | 5 084 | 127 |
| | | 50 | 6 219 | 124 | 6 487 | 130 | 6 288 | 126 |

DEFAULT PROGRAMMING

69344 : 35 W / 4000 K

69345 : 50 W / 4000 K

ACCESSORIES (order separately)

| Order code | Type | Compatible with |
|--------------|-------------|-----------------|
| 67164 | Drywall kit | 2'x2' |
| 63491 | Drywall kit | 2'x4' |

COMPATIBLE DIMMERS¹

| Brand | Model |
|----------------|--------------------------|
| Leviton | DD710, IP710 |
| Lutron | MS-Z101, NTSTV-DV, DVSTV |
| Legrand | RH4FBL3PTC |

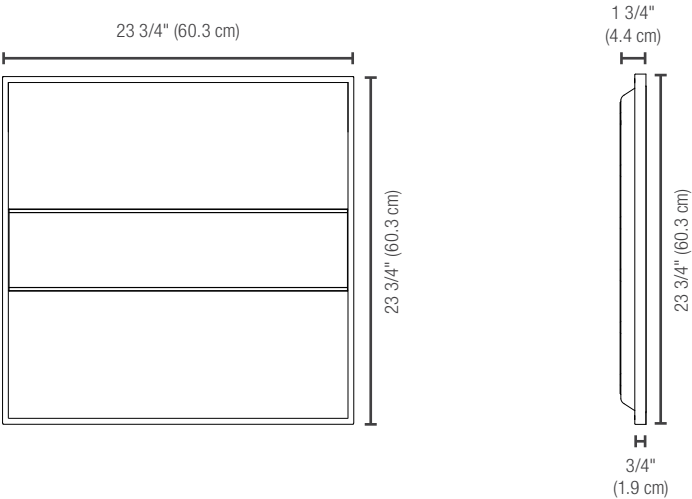
Dimming range: 10%-100%

¹ This table shows dimmers that have been tested and have demonstrated proper operation under normal conditions. Each installation being unique, various factors such as load, common neutrals or other electrical products on the circuit can, in certain instances, cause variance in system performance. Read and comply to the dimmer installation instructions. Consult dimming system manufacturer for additional support in operation. Some dimmers may require more than one product for stable operation. Stanpro recommends to use dimmers designed to work with LED products. Older dimmers designed for incandescent products may cause erratic operation.

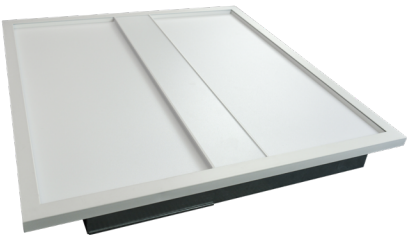
Data is based upon tests performed in a controlled environment. Actual performance can vary depending on operating conditions. All products are subject to change or may be discontinued any time without notice. Please contact your Stanpro customer service representative to confirm inventory levels at time of order.

DIMENSIONS AND WEIGHTS

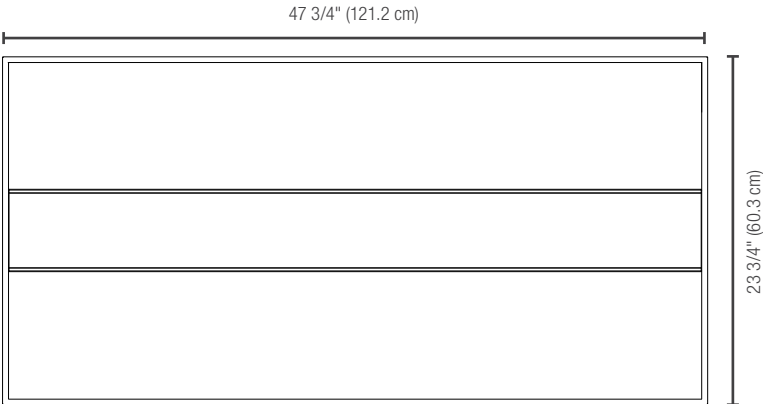
2'x2'



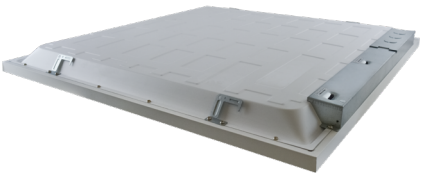
Front view:



2'x4'



Back view:



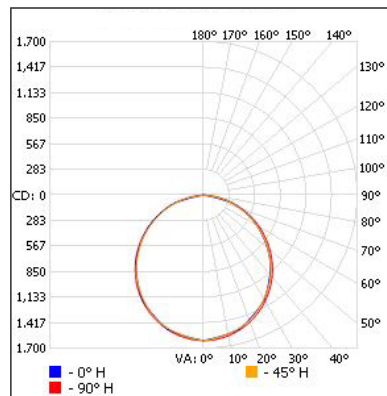
| | 2x2 | 2x4 |
|------------------|-------|-------|
| Net weight (lbs) | 10.14 | 16.09 |

Data is based upon tests performed in a controlled environment. Actual performance can vary depending on operating conditions. All products are subject to change or may be discontinued any time without notice. Please contact your Stanpro customer service representative to confirm inventory levels at time of order.

PHOTOMETRIC DATA¹

69344 • L3PNA-2LPS35P-Q/3C • 35 W • 4 000 K • 4 448.7 lm

Polar candela distribution



Zonal lumen summary

| Zone | Lumens | % Fixture |
|-------|---------|-----------|
| 0-30 | 1 236.0 | 27.8 |
| 0-40 | 2 019.6 | 45.4 |
| 0-60 | 3 556.7 | 80 |
| 60-90 | 891.9 | 20 |
| 0-90 | 4 448.7 | 100 |

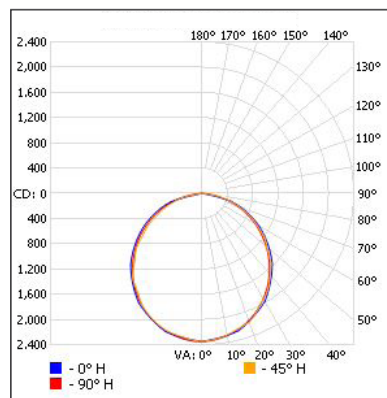
Illuminance at a distance

| Center beam fc | | Beam width | |
|----------------|-------|------------|-------|
| 2.0' | 403.7 | 5.7' | 6.0' |
| 4.0' | 100.9 | 11.5' | 11.9' |
| 6.0' | 44.9 | 17.2' | 17.9' |
| 8.0' | 25.2 | 23.0' | 23.9' |
| 10.0' | 16.1 | 28.7' | 29.8' |

■ Vert. spread : 110.3°
■ Horiz. spread : 112.3°

69345 • L3PNA-4LPS50P-Q/3C • 50 W • 4 000 K • 6 487.2 lm

Polar candela distribution



Zonal lumen summary

| Zone | Lumens | % Fixture |
|-------|---------|-----------|
| 0-30 | 1 804.3 | 27.8 |
| 0-40 | 2 951.2 | 45.5 |
| 0-60 | 5 198.0 | 80.1 |
| 60-90 | 1 289.2 | 19.9 |
| 0-90 | 6 487.2 | 100 |

Illuminance at a distance

| Center beam fc | | Beam width | |
|----------------|-------|------------|-------|
| 2.0' | 587.2 | 6.1' | 5.7' |
| 4.0' | 146.8 | 12.2' | 11.5' |
| 6.0' | 65.2 | 18.3' | 17.2' |
| 8.0' | 36.7 | 24.4' | 23.0' |
| 10.0' | 23.5 | 30.5' | 28.7' |

■ Vert. spread : 113.5°
■ Horiz. spread : 110.3°

¹ Complete IES files available on our website.

Data is based upon tests performed in a controlled environment. Actual performance can vary depending on operating conditions. All products are subject to change or may be discontinued any time without notice. Please contact your Stanpro customer service representative to confirm inventory levels at time of order.