

PROJECT:

DISTRIBUTOR:

DRAWN BY:

CATALOGUE #:

CONTRACTOR:

DATE:

TYPE:

PO:



**STANPRO**

SPEC SHEET

**CLASS I, DIVISION 2, GROUPS C, D**  
**12 V DC, 36-160 W**

## FEATURES AND SPECIFICATIONS

### CIRCUITRY

- LED ultra bright light source
- 120/347 V AC Input, field selectable
- 12 V DC emergency voltage output
- Wattage capacities from 36 to 160 watts
- 30 minutes emergency power duration standard
- Sealed momentary push button test switch
- Diagnostic/pilot LED for AC ON
- Fully automatic, current limited charger
- Solid state design and construction with brownout and short circuit protection
- Temperature compensated
- Large terminal strip connector all electrical connections - AC and DC
- Maintenance free, sealed lead acid battery

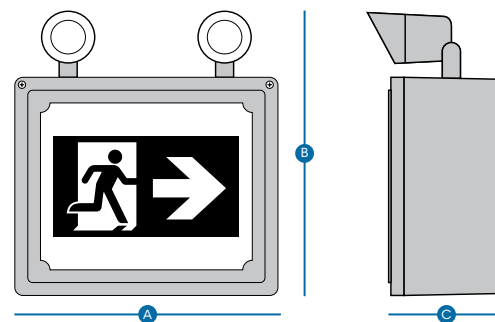
### MECHANICAL

- Heavy-duty non-metallic, reinforced construction
- One piece, molded and gasketed lens
- Bottom hinged cover secured with two screws
- One-way breather valve for release of gases and/or moisture condensation
- All external metal hardware is stainless steel
- Single face, wall mount only
- Grey finish housing, white faceplate standard

### COMPLIANCES

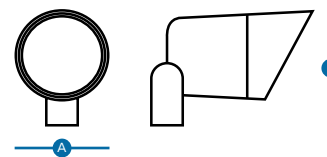
- CSA Certified to C22.2 #137
- CSA Certified to C22.2 #141-15
- CSA Certified to C860-11
- Class I, Division 2, Groups C, D
- Meets requirements of ICES-005

## TECHNICAL DRAWINGS



### TYPE D - MR16

Die cast



Part number	A	B	C
	15 1/4" (38.74 cm)	13 1/4" (33.66 cm)	7" (17.78 cm)
<b>Type D - MR16</b>	3" (7.62 cm)	4 1/2" (11.43 cm)	-

\* Please refer to the product web page to view detailed drawings by size.



ICES  
005



Energy Verified  
Énergie Vérifiée

## ORDERING GUIDE

Dropdown selections may not display correctly in web browsers. For full functionality, please download the file to use all features.

PRMH	1		1			GY	/	
Series	Volts	Wattage	Number of Faces	Head/Lamp	Lamp	Color		Options
PRMH	1 - 12 V	See model rating below	1 - Single face	0 - No heads 1D - One MR16 Weather-Proof 2D - Two MR16 Weather-Proof	See lamp selection chart below	GY - Grey		<b>RFS</b> - Radio frequency suppression (specify AC voltage) 

## LAMP SELECTION

MR16 - Small head c/w MR16 or LED lamp	12 V
LED	4LR, 5LA, 6LA, 7LA

## LUMEN TABLE

Watts	Lumens
4W LR	388
5W LA	435
6W LA	507
7W LA	652

## MODEL RATINGS

Model	Volts (V)	Wattage Capacities (W)			
		4LR	5LA	6LA	7LA
PRMH_1036	12	36	18	12	9
PRMH_1050	12	50	25	16	12
PRMH_1072	12	72	36	24	18
PRMH_1100	12	100	50	33	25
PRMH_1160	12	160	80	53	40

## TEMPERATURE CODES

Head/Lamp	Temperature code (25°C)	Temperature code (40°C)
00	T5	T4A
D4L	T5	T4A
D5L	T3C	T3B
D6L	T4	T3C
D7L	T4	T3C

## SPACING GUIDE

Mounting Height	Spacing Center to Center (ft)			
	4LR	5LA	6LA	7LA
8 ft	76	81	94	108
10 ft	79	79	93	106
15 ft	66	62	82	96
20 ft	53	49	73	87

## CONFIGURATIONS



Comes standard with three pictogram legends for direction selection.

## BOTTOM VIEW



- 1- AC ON PILOT LED
- 2- BREATHER VALVE
- 3- TEST SWITCH