

## VTL8-L GEN. 2 3 CCT AND POWER SELECTABLE, NEMA 4X, NSF VAPOR TIGHT SERIES

8' luminaire providing superior light distribution with the ability to withstand reduced temperatures and moderate impact. Ideal for environments where moisture and/or dust may be present. The watertight seal locks out dust and makes this fixture the perfect solution for applications that may require: washability/hose down



### ■ Color and Power Selectable

CCT Selectable feature available on all configurations offering the versatility to switch between 3 color temperatures: 3 500/4 000/5 000 K. Convenient for a variety of projects and applications. An ideal solution for reducing stocking inventory.

### ■ Easy Maintenance

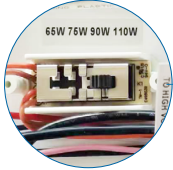
Smooth surfaces are easy to clean making this fixture perfect for NSF compliant environments. Internal components are easily accessible with the stainless steel clips. Once closed, the gasketed seal keeps the LEDs and electrical components secure from environmental debris and moisture.

### ■ Easy Installation

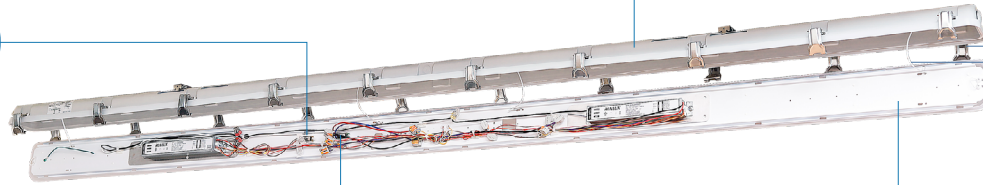
Designed for easy access and installation, the gear tray is attached to the lens exposing the internal components when the fixture is in open position.

## VTL8-L GEN. 2: At A Glance!

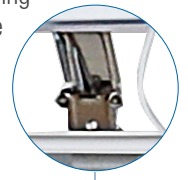
Slider button for the Color Temperature and Power Select feature



Lightweight, slim and high impact resistant polycarbonate construction



Stainless Steel Clips and Safety Straps support the Lens and Gear Tray to the Housing during installation and maintenance



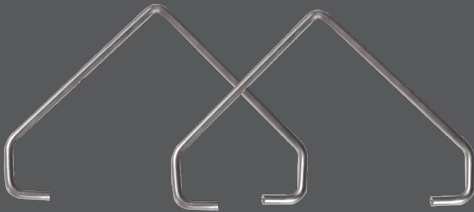
Gear Tray attached to Lens for easy installation and maintenance



## Included with Every Luminaire!

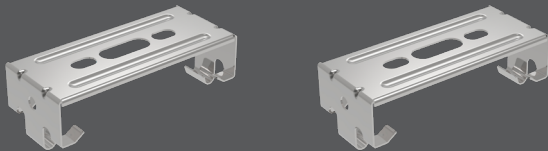
### V-HOOKS

Set of 2 pcs for suspension mounting on chain or aviation cable  
To be used in conjunction with the surface mount brackets



### MOUNTING BRACKETS

Set of 2 pcs stainless steel surface mounting hardware for wall or ceiling



### WATERTIGHT GLANDS

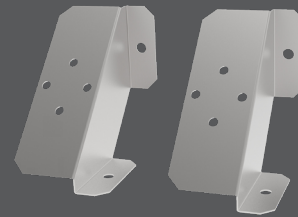
Set of 2 pcs



## ACCESSORIES (SOLD SEPARATELY)

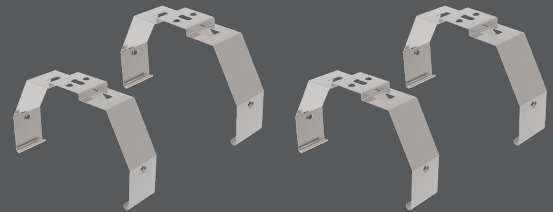
### 90° ANGLE BRACKETS

Set of 2 pcs in stainless steel



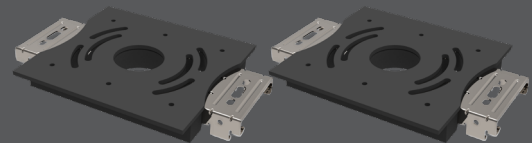
### TAMPER PROOF BRACKETS

Set of 4 pcs in stainless steel



### JUNCTION BOX BRACKET

Set of 2 pcs





# Summary Specification Table

Order code	Model number	Watts (W)	Volts (V AC)	Color temp. (K) <sup>1</sup>	Lumen output (lm) <sup>2,3</sup>	Efficacy (lm/W)	CRI	Life L70 (hrs) <sup>4</sup>	Tested hours LM-80 (hrs) <sup>4</sup>	Dimming	Power factor	THD (%)
<b>8<sup>1</sup></b>												
69568	VTL8-LS1B-Q-3C	65	120-347	3 500/4 000/5 000	9 622	150	80+	> 54 000	9 000	0-10 V	>0.9	<20
69569	VTL8-PS110B-Q-3C	65/75/90/110	120-347	3 500/4 000/5 000	9 796/11 148/13 121/16 101	146	80+	> 54 000	9 000	0-10 V	>0.9	<20

<sup>1</sup> Typical color temperature range: +/- 5 %.

<sup>2</sup> Lumen values are derived from photometric testing. Initial lumens range: +/- 10 %.

<sup>3</sup> Lumen values are derived from DLC reported data at 4 000 K. Please refer to the LUMEN SPECIFICATION TABLE for more details on other color temperatures

<sup>4</sup> Life hours are derived from IESNA LM-08 testing report and projected per IESNA TM-11 extrapolations

## DLC UNIQUE ID TABLE

Order code	Model Number	DLC Premium Unique ID <sup>1</sup>	DLC Premium Unique ID <sup>2</sup>	DLC Standard Unique ID <sup>3</sup>
69568	VTL8-LS1B-Q-3C	S-FGUWTE	S-GT07AH	S-QSEA1C
69569	VTL8-PS110B-Q-3C	S-0IY51Q	S-CYM3SB	S-DJH3F0

<sup>1</sup> Primary Use Designation: Stairwell and Passageway Luminaires

<sup>2</sup> Primary Use Designation: High-Bay Luminaires for Commercial and Industrial Buildings

<sup>3</sup> Primary Use Designation: Direct Linear Ambient Luminaires

## ORDERING GUIDE

Series	Lumen package (lm)	Volts (VAC)	Color temp. (K)	Options
VTL8	LS1B - 65 PS110B - 65/75/90/110	Q - 120-347	3C - 3 500/4 000/5 000	Blank - No sensor OS <sup>1,3</sup> - Occupancy sensor DIM1 <sup>2</sup> - 5 wire cable for AC and 0-10 V dimming L6 - 6 ft white power cord L10 - 10 ft white power cord L6-BK - 6 ft black power cord L10-BK - 10 ft black power cord EL1 <sup>7</sup> - 1 LINK Normally ON emergency EL2 <sup>7</sup> - 2 LINK Normally ON emergency DL <sup>3,5,6</sup> - Emergency back up (0°C - 25°C) 120 V, 120-277 V KV - 10 kV surge protection CH <sup>4</sup> - Center hole 7/8" AC <sup>2,4</sup> - Aviation cable kit BM - Smart module BMS - Smart module & sensor

<sup>1</sup> To see available options, please consult the occupancy sensors section

<sup>2</sup> When selecting AC or DIM1 option, please also select cable option whether L6, L10, L6-BK or L10-BK. DL option not compatible with DIM1

<sup>3</sup> When selecting CH, OS (external) and DL options, the fixture maintains wet location status, however NEMA 4X and IP rating are not applicable

<sup>4</sup> Aviation cable length based on selected power cable length

<sup>5</sup> Fixture functional in AC mode, when power goes off emergency driver (DL) powers LED boards. One emergency driver per fixture is standard unless otherwise specified

<sup>6</sup> Emergency backup only available for 120-277 V

<sup>7</sup> The LINK Emergency Power conversion module is compatible with all the following configurations: PS110B. Not compatible with the following options: DL, OS (external). When in Emergency Mode, unit only consumes 11 watts

## LUMEN SPECIFICATION TABLE

Order Code	Model Number	Watts (W)	Volts (V)	3 500 K		4 000 K		5 000 K	
				Lumen output (lm)	Efficacy (lm/W)	Lumen output (lm)	Efficacy (lm/W)	Lumen output (lm)	Efficacy (lm/W)
69568	VTL8-LS1B-Q-3C	65	120-347	9 445	146	9 622	149	9 336	144
		65		9 512	146	9 796	150	9 651	148
		75		10 824	144	11 148	148	10 982	146
		90		12 740	141	13 121	146	12 926	143
		110		15 634	142	16 101	146	15 862	144
69569	VTL8-PS110B-Q-3C	65	120-347	9 445	146	9 622	149	9 336	144
		65		9 512	146	9 796	150	9 651	148
		75		10 824	144	11 148	148	10 982	146
		90		12 740	141	13 121	146	12 926	143
		110		15 634	142	16 101	146	15 862	144

## DEFAULT PROGRAMMING

69569 110 W / 4 000 K