

## L2TRV Tri-Level Motion Sensor LED Strip

The L2TRV series of LED strips feature an integrated tri-level microwave or PIR motion sensor, preventing energy loss and increasing energy savings. These luminaires feature a rounded lens that evenly diffuses the light and an innovative housing designed for quick and easy installation. The L2TRV series is the perfect choice for applications requiring continuous lighting, such hallways, common areas, parkades and stairwells.



### ■ Integrated Motion Sensor

A microwave or PIR motion sensor with tri-level, bi-level, On/Off and daylight harvesting capabilities. Sensor settings are field adjustable to meet the specific lighting needs of all spaces.

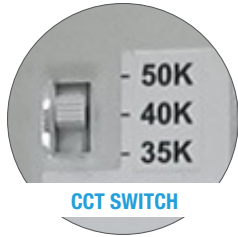
### ■ Colour and Power Selectable

Versatile LED strip luminaires with the ability to adapt to the colour temperature (3 500/4 000/ 5 000 K) and lumen output requirements for a variety of projects and applications. A single SKU can now replace up to 18 individual luminaires - a distributor's best friend!

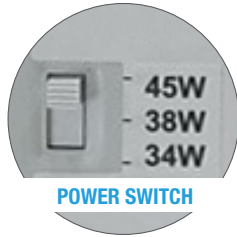
### ■ 120-347 V

Say goodbye to stocking both 120-227 V and 347 V configurations and never worry about sending the wrong voltage to a job site - our drivers function automatically between 120 V and 347 V.

## L2TRV - At a Glance

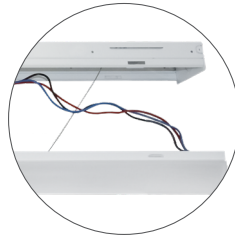


CCT SWITCH

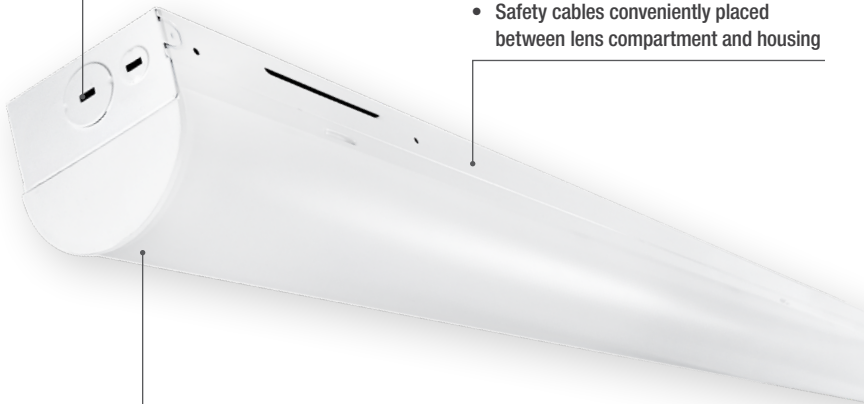


POWER SWITCH

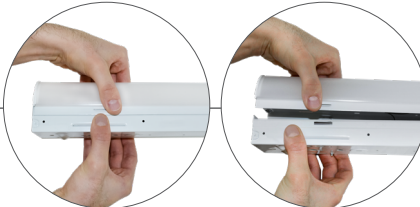
- CCT and Power Selectable switches placed discretely inside the housing



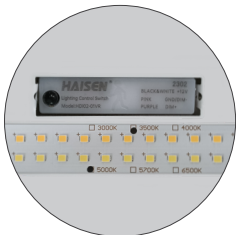
- Safety cables conveniently placed between lens compartment and housing



- Two-part housing design with tool-less entry!



## Sensor Technologies



### Microwave

*Installed Behind the Lens*



### PIR

*Installed On the End of the Luminaire*

## Included with Every Luminaire!



Junction Box  
Cover Plate



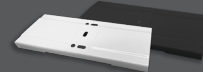
V-Hooks



## Accessories (Sold Separately)



Transparent End Caps



Continuous Row  
Mounting Connectors



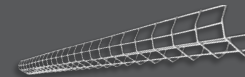
Suspension Chain  
Kit



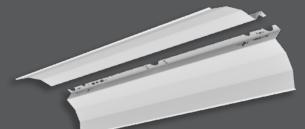
10' Complete Aircraft Cable  
Kits with 5-Wire Power Feed  
and 2 Canopies



10' Single Side Aircraft  
Cables with Canopy  
(Non-Power Feed)



Wire Guard Kits



Reflector Wings Kit



Remote Control for  
Microwave Motion Sensor



Remote Control for  
PIR Motion Sensor

*The remote control is required to modify sensor programming.  
A single remote control can be used to program multiple sensors.*

## Looking for Regular LED Strips?

Check out the L2STR Series!

