



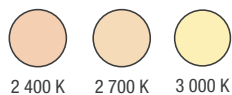
# BUILD YOUR OWN PROFESSIONAL SYSTEM

Installed on their own with peel & stick 3M construction adhesive back or within a covered aluminum extrusion for a diffused effect. Build complete systems to adapt to all task or accent lighting needs; whether surface mounted, recessed or suspended.

Create your own configuration by choosing between the following options:

## TAPE OPTIONS

### Color Temperatures



RGB

### Lengths

16.4' (5 m)

65.5' (20 m)

### IP Ratings

Dry locations

Wet locations<sup>2</sup>

### Voltages

12 V

24 V

### Watts Per Foot

1.5 W

2.9 W

4.4 W

### Connectors<sup>1</sup>



Wire to wire

Tape to tape & tape to wire



PCB joiners



Wire to DC male  
or Wire to DC female  
or 5 to 1 DC Splitter

### Power Supplies



12 V DC



24 V DC

## EXTRUSION OPTIONS

### Lens Finishes



Clear  
65871



Opal  
65872



Frosted  
65873



Diffused  
65874



Clear rounded  
65875



Frosted rounded  
65876

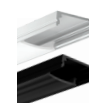


Opal rounded  
65877

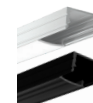


Black  
70118

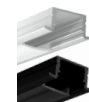
### Extrusions Styles<sup>3</sup>



**Series 100**  
Sleek Extrusion  
65865 & 70110



**Series 200**  
Deep Extrusion  
65866 & 70111



**Series 210**  
Recessed Extrusion  
65867 & 70112



**Series 300**  
Rounded Extrusion  
65869



**Series 400**  
Versatile Extrusion  
65868



**Series 500**  
Corner Extrusion  
65870



**Series 600**  
Heatsink  
66678

### Mounting Options



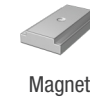
Invisible



For corner



Adjustable



Magnet



45°



180°



Suspension kit

<sup>1</sup> Not compatible with extrusions.

<sup>2</sup> IP67 LED Tapes can't be cut and are only available in 16.4' (5 m).

<sup>3</sup> Available in 8' (2.4m). Please note that tapes should be about an inch shorter than the extrusion. Please ask your sales representative for more information.

Custom lengths are also available upon requests. Wide variety of LED drivers available to complete your systems. Ask a sales representative for more information.

## Tapes and extrusions



standardpro.com



# BUILD YOUR OWN PROFESSIONAL SYSTEM

The 120 V LED tape works on direct line voltage and can easily be installed without any additional driver added to the system! It is ideal for accent lighting in commercial, residential and retail applications. The 120V tapes are made of high quality LED chips and are offered in a variety of color temperatures with a high CRI of 90.

Offered in 3 different reel sizes, this product allows for longer runs with a maximum of 164 feet and is ideal for ceiling and wall cover. Can also be mounted within an aluminum extrusion for a sleek and uniform lighting solution.

Find the right fit for your spaces by choosing between the following options:



## 120 V LED TAPE

### Color Temperatures



2 700 K



3 000 K



4 000 K

### Applications



wet location

### IP Ratings

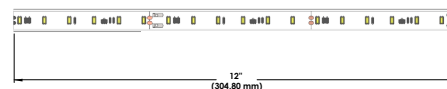


### Lengths<sup>1</sup>

32.8' (10 m)

98.4' (30 m)

164' (50 m)



### Accessories



Hardwire Kit



120 V Power Cord



6" and 12" Jumper



Mounting bracket



Endcap



Electrical box cover plate - Rectangular



Electrical box cover plate - Round

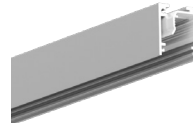
## EXTRUSION OPTION

### Lens<sup>2</sup>



Series 4050  
Prime Lens  
69859

### Extrusion<sup>2</sup>



Series 4050  
Extra Deep Extrusion  
69858

### Mounting options



Invisible



Magnet



Adjustable



90°




45°



For row mounting

# Tapes and extrusions

 [standardpro.com](http://standardpro.com)

<sup>1</sup> Can be cut every 12" on the field for a complete custom solution.

<sup>2</sup> Available in 8' (2.4m).