

CDL-L

HAZARDOUS LOCATION LED LINEAR LUMINAIRE

Class I, Division 2, Groups A, B, C, D

Class II, Division 1, Groups E, F, G

Class III

Non recessed Marine luminaires, outside type (salt water)

The CDL-L Hazardous Location LED linear luminaire is designed for installations where moisture, dirt, dust, corrosion and vibration may be present. The CDL-L is also NEC/CEC certified to be used in hazardous environments where there is presence of flammable vapors or gases.

FEATURES AND SPECIFICATIONS

• Construction

Housing

Rugged and resilient housing made of a copper-free aluminum, corrosion resistant casting, with separated driver compartment for improved thermal management. All exposed fasteners are quality stainless steel as well as high temperature quality silicone gasketing. Available in a grey casting color and a superior electrostatic powder coating.

Temperature ratings

Based on the surface temperature of the fixture;

- Class I, Division 2 is rated T3C (will not exceed 160°C)
- Class II, Division 1 & Class III are rated T4A (will not exceed 120°C)

Ambient operating temperature

-40°C to +50°C

Ambient operating humidity

5% ~ 95% RH

Optics

Comes standard with a thermal shock and impact resistant polycarbonate lens and is available in a clear finish with a 110° beam angle.

• Electrical

Available in either A1 (40 W) or A2 (80 W) configurations with a lumen per watt ratio of 132 to 150 lm/W. Driver input voltage is 347-480 V 50/60 Hz. All drivers are non-dimmable and have 4 kV integrated transient surge protection with a power factor >0.95. Durable high LUXEON LEDs with solder-less board connections for shock and vibration resistance. The CDL-L is offered in either 4 000 and 5 000 K, with a color rendering index (CRI) >70.

• NEC/CEC Standards

NEC500/CEC Section 18: Existing plants

Hazloc C

- Class I, Division 2, Groups A, B, C, D
- Class II, Division 1, Groups E, F, G
- Class III

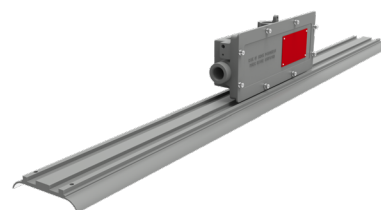
NEC505/CEC Section 18 Zones: New plants

Hazloc C

- Class I, Zone 2, Group IIC
- Zone 21

• Compliances

- Meets requirements of ICES-005 issue 4 for class A products
- 5G vibration resistant in compliance with IEC60598-1 standard, CL-4.20
- IP66
- IK08
- UL1598A
- UL1598
- UL8750
- CSA C22.2 No.137
- CSA C22.2 No.250, No.250.13

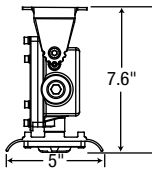
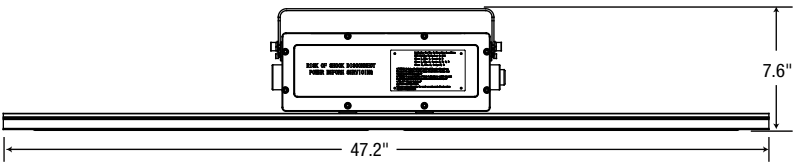
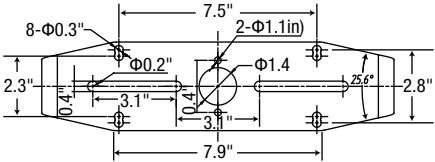
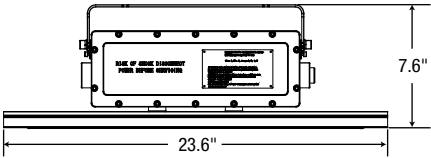


OVERVIEW

Light source	LED
Watts (W)	40 - 80
Lumen output (lm)	5 984 - 11 761
Efficacy (lm/W)	132 - 150
Color temperature (K)	4 000, 5 000
CRI	>70

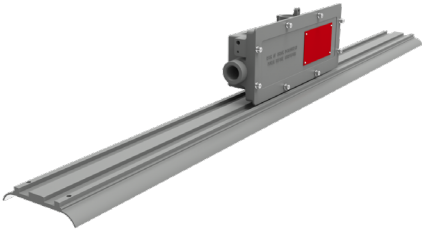
DIMENSIONS

Part #	Net weight (lbs)	Dimensions (LxWxH)
CDL-LS1	12.1	23.6 x 5 x 7.6"
CDL-LS2	16.7	47.2 x 5 x 7.6"



MOUNTING

PENDANT (STANDARD)



ACCESSORIES REQUIRED FOR OPTIONAL MOUNTING

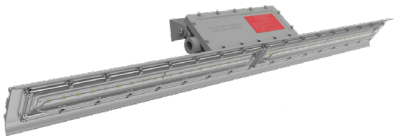
CEILING MOUNT

BKT761-LN



WALL MOUNT

BKT761-LN



Data is based upon tests performed in a controlled environment. Actual performance can vary depending on operating conditions. All products are subject to change or may be discontinued any time without notice.

QUICK SHIP AND TECHNICAL SPECIFICATION TABLE 🕒¹

Part number	Watts (W)	Color temp. (K) ²	Lumen output (lm) ³	Efficacy (lm/W)	CRI	Life L70 (hrs) ⁴	Tested hours LM-80 (hrs) ⁴	LED current (mA)	Power factor	THD (%)	B.U.G. rating	Beam angle (°)	Case qty (master)
347-480 V													
CDL-LS1-H-C/40K-T	40	4 000	5 984	150	70	>54 000	9 000	84	0.89	16	B4-U0-G1	110	1
CDL-LS2-H-C/40K-T	80	4 000	11 761	147	70	>54 000	9 000	84	0.89	9	B4-U0-G1	110	1
CDL-LS1-H-C/50K-T	40	5 000	5 480	132	70	>54 000	9 000	84	0.89	16	B4-U0-G1	110	1
CDL-LS2-H-C/50K-T	80	5 000	10 960	137	70	>54 000	9 000	84	0.89	9	B4-U0-G1	110	1

¹ **QUICK SHIP:** Product availability is subject to change without notice. Please contact your Stanpro customer service representative to confirm inventory levels at time of order.

² Typical color temperature range: +/- 5 %.

³ Lumen values are derived from photometric testing. Initial lumens range: +/- 10 %.

⁴ Life hours are derived from IESNA LM-80-08 testing report and projected per IESNA TM-21-11 extrapolations.

ACCESSORIES (order separately)

Part number	Type
BKT761-LN	U-bracket



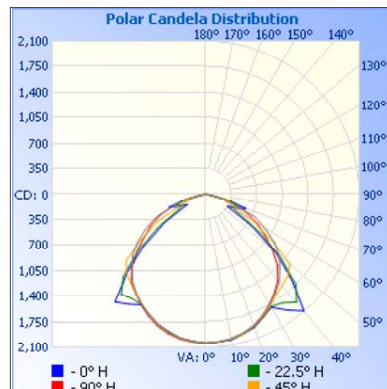
BKT761-LN
U-bracket

Data is based upon tests performed in a controlled environment. Actual performance can vary depending on operating conditions.
All products are subject to change or may be discontinued any time without notice.

PHOTOMETRIC DATA¹

CDL-LS1-W-C/40K-T • 6 041 lm

Polar candela distribution



Zonal lumen summary

Zone	Lumens	% Fixture
0-30	1 598.1	28.5%
0-40	2 682.6	47.9%
0-60	4 750.2	84.7%
60-90	855.7	15.3%
0-90	5 605.9	100%

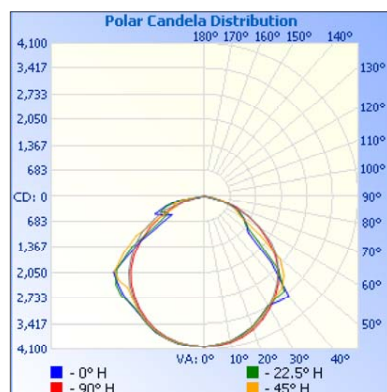
Illuminance at a distance

Center beam fc		Beam width	
1.7'	707 fc	4.3'	3.4'
3.3'	188 fc	8.3'	6.6'
5.0'	81.7 fc	12.6'	10.0'
6.7'	45.5 fc	16.9'	13.5'
8.3'	29.6 fc	20.9'	16.7'
10.0'	20.4 fc	25.2'	20.1'

■ Vert. spread: 103°
■ Horiz. spread: 90.3°

CDL-LS2-W-C/40K-T • 12 231 lm

Polar candela distribution



Zonal lumen summary

Zone	Lumens	% Fixture
0-30	3 160.4	27.8%
0-40	5 263.3	46.4%
0-60	9 356.8	82.4%
60-90	1 995.3	17.6%
0-90	11 352.10	100%

Illuminance at a distance

Center beam fc		Beam width	
1.7'	1 396 fc	4.3'	5.0'
3.3'	370 fc	8.3'	9.7'
5.0'	161 fc	12.5'	14.7'
6.7'	89.9 fc	16.8'	19.7'
8.3'	58.6 fc	20.8'	24.5'
10.0'	40.3 fc	25.1'	29.5'

■ Vert. spread: 102.9°
■ Horiz. spread: 111.7°

¹ Complete IES files available on our website.