

PROJECT:

DISTRIBUTOR:

DRAWN BY:

CATALOGUE #:

CONTRACTOR:

DATE:

TYPE:

PO:



**STANPRO**

SPEC SHEET

## FEATURES AND SPECIFICATIONS

### CIRCUITRY

- 120/347 VAC 60 Hz input, field selectable
- LED Emergency DC wattages as follows:  
**6 VDC = 0.9 W; 12 VDC = 1.8 W**
- 6 VDC 27 W and 36 W or 12 VDC 72 W emergency power output versions (as specified)
- 36 W: Up to 4 hours emergency power duration as a standalone unit
- 72 W: Up to 8 hours emergency power duration as a standalone unit
- Momentary push button test switch
- Pilot LED for AC ON and CHARGE
- Fully automatic, current limiter charger
- Solid state design and construction
- Short circuit protection
- Brown out circuit monitors flow of AC current and will energize the battery unit with emergency power when reduction in power occurs
- Temperature compensated
- Maintenance free, sealed lead acid battery

### MECHANICAL

- 18 Gauge steel construction
- Slide out faceplates and backplates for rapid and simple installation
- Universal spider knockout pattern stamped into backplate for junction box mounting
- Universal models include ceiling or end mount, field installable canopy kit c/w spider plate
- Front head mounting is standard
- Multiple conduit entry knockouts
- White powder coat finish standard
- PAR18 small style, high impact thermoplastic heads complete with high output optics
- LED heads with limited lifetime warranty<sup>1</sup>

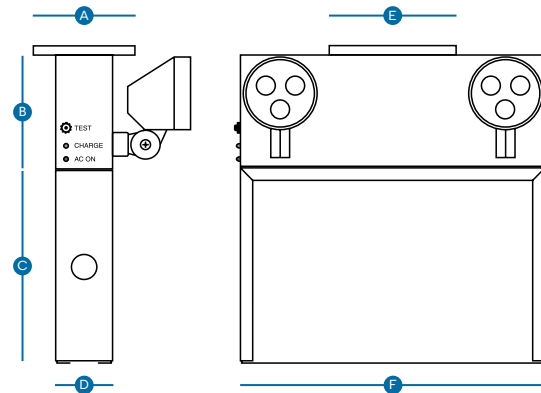
### APPROVALS

- CSA Certified to C22.2 #141-15, C860

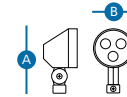
### COMPLIANCE

- Meets requirements of ICES-005

## TECHNICAL DRAWINGS



TYPE N - PAR18



Type	A	B	C	D	E	F
<b>Combo</b>	4 3/8" (11.10 cm)	4 7/8" (12.40 cm)	7 3/4" (19.70 cm)	2 1/4" (5.70 cm)	5 5/8" (14.30 cm)	12" (30.50 cm)
<b>Type N PAR18</b>	4 1/2" (11.40 cm)	2 5/8" (6.70 cm)	-	-	-	-

<sup>1</sup>Please refer to the product web page to view detailed drawings by size.



ICES  
005



Energy Verified  
Energie Vérifiée

<sup>1</sup>For complete warranty details, please see the terms and conditions on our website.

## QUICK SHIP AND TECHNICAL SPECIFICATION TABLE<sup>1</sup>

Type	Model Number	DC Volts (VDC)	Watts (W)	Number of Heads	Head	Lamp (W)	Light Source	Input Volts (VAC)	Color
	PRMS-2L	6	36	2	N	2	LED	120/347	White
	PRMS-3L	6	36	2	N	3	LED	120/347	White
	PRMS12-2L	12	72	2	N	2.5	LED	120/347	White

<sup>1</sup> **QUICK SHIP:** Product availability is subject to change without notice. Please contact your Stanpro customer service representative to confirm inventory levels at time of order.

## WIREGUARD

	Model Number	Description
<b>Wall mount</b>	WGD510-V2	19.75 x 19.75 x 7.25
<b>Ceiling mount</b>	WGD650-V2	17.75 x 17.75 x 16.50
<b>End mount</b>	WGD650-V2	17.75 x 17.75 x 16.50

## MODEL RATINGS

Model	Volts (V)	Wattage Capacities (W)			
		30 min.	60 min.	90 min.	120 min.
<b>PRMS-2L</b>	6	36	18	12	9
<b>PRMS-3L</b>	6	36	18	12	9
<b>PRMS12-2L</b>	12	72	36	24	18

## SPACING GUIDE

Mounting Height	Spacing Center to Center (ft)		
	2 W	2.5 W	3 W
<b>8 ft</b>	31	41	78
<b>10 ft</b>	32	37	75
<b>15 ft</b>	23	38	66
<b>20 ft</b>	19	21	59

## CONFIGURATIONS



Comes standard with three pictogram legends for direction selection.



For double face no arrow options, please order the PRMS along with the following fiber: FIBER-RMS